
PICSTART[®] PLUS USER'S GUIDE

Information contained in this publication regarding device applications and the like is intended by way of suggestion only. No representation or warranty is given and no liability is assumed by Microchip Technology Incorporated with respect to the accuracy or use of such information. Use of Microchip's products as critical components in life support systems is not authorized except with express written approval by Microchip.

© 2000 Microchip Technology Incorporated. All rights reserved.

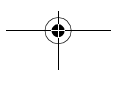
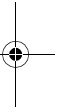
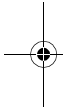
The Microchip name and logo, PIC, PICMASTER, PICSTART, PRO MATE, PICmicro, and MPLAB are registered trademarks of Microchip Technology Incorporated in the U.S.A. and other countries. SQTP is a service mark of Microchip Technology Inc.

All product/company trademarks mentioned herein are the property of their respective companies.



PICSTART[®] Plus User's Guide

NOTES:





MICROCHIP

PICSTART[®] PLUS USER'S GUIDE

Table of Contents

General Information

Introduction	1
Highlights	1
About This Guide	1
Warranty Registration	3
Recommended Reading	3
Troubleshooting	4
The Microchip Internet Web Site	5
Development Systems Customer Notification Service	6
Customer Support	8

Chapter 1. Quick Start

1.1 Introduction	9
1.2 Highlights	9
1.3 Installing MPLAB IDE and PICSTART Plus	9
1.4 Connecting PICSTART Plus to Your PC	10
1.5 Using PICSTART Plus with MPLAB IDE	10

Chapter 2. PICSTART Plus Preview

2.1 Introduction	13
2.2 Highlights	13
2.3 What is PICSTART Plus	13
2.4 Components of PICSTART Plus System	14
2.5 PICSTART Plus CE Compliance	14
2.6 How PICSTART Plus Helps You	15
2.7 MPLAB Integrated Development Environment	15
2.8 MPLAB Development Tools	16

PICSTART[®] Plus User's Guide

Chapter 3. PICSTART Plus Installation

3.1	Introduction	17
3.2	Highlights	17
3.3	Host Computer System Requirements	17
3.4	Installing PICSTART Plus Hardware	17
3.5	Installing MPLAB IDE Software	19
3.6	Starting MPLAB IDE	20
3.7	Configuring the Serial Port for PICSTART Plus	21
3.8	Setting Up the MPLAB Development Mode	22
3.9	Starting PICSTART Plus	23

Chapter 4. Programming Examples

4.1	Introduction	25
4.2	Example: Programming a Mid-Range PICmicro MCU Device	25
4.3	Example: Programming Calibration Devices	34

Chapter 5. Using PICSTART Plus

5.1	Introduction	49
5.2	Highlights	49
5.3	Procedure for Programming a Device	49
5.4	Verifying the Programming	57
5.5	Reading a Device	58

Chapter 6. PICSTART Plus – Reference

6.1	Introduction	61
6.2	Highlights	61
6.3	PICSTART Plus Device Programmer Dialog	62
6.4	Configuration Bits Dialog	64
6.5	Program Memory Window	65
6.6	Program/Verify Dialog	66
6.7	Read Device Dialog	67
6.8	PICSTART Plus Menu Items	68
6.9	Upgrading the PICSTART Plus Operating System	69

Table of Contents

Appendix A. Connecting to a 25-Pin Serial Port

A.1	Introduction	71
A.2	Highlights	71
A.3	Connection Description	71

Appendix B. PICSTART Plus VPP Adjustment

B.1	Introduction	73
B.2	Highlights	73
B.3	Overview	73
B.4	Procedure	73
B.5	Validation	73

Appendix C. Troubleshooting

C.1	Introduction	75
C.2	Highlights	75
C.3	Common Problems	75

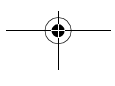
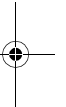
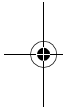
Index	81
--------------------	-----------

Worldwide Sales and Service	84
--	-----------



PICSTART[®] Plus User's Guide

NOTES:





MICROCHIP

PICSTART[®] PLUS USER'S GUIDE

General Information

Introduction

This chapter contains general information about this manual and contacting customer support.

Highlights

Topics covered in this chapter:

- About this Guide
- Recommended Reading
- Warranty Registration
- Troubleshooting
- The Microchip Internet Web Site
- Development Systems Customer Notification Service
- Customer Support

About This Guide

Document Layout

This document describes how to use PICSTART Plus as a development tool to program firmware in a PICmicro device. The manual layout is as follows:

- **Chapter 1: PICSTART Plus Preview** – What PICSTART Plus is and how it works.
- **Chapter 2: Installing and Setting Up PICSTART Plus** – Describes how to install PICSTART Plus hardware and the MPLAB IDE software. Explains how to set up the MPLAB IDE and PICSTART Plus to work together and how to start PICSTART Plus from the MPLAB IDE.
- **Chapter 3: Programming Examples** – Contains several examples (tutorials) for programming calibration memory devices, memory devices, and other PICmicro[®] MCU devices.
- **Chapter 4: Using PICSTART Plus with MPLAB** – Provides step-by-step instructions on using PICSTART Plus to program, read, and verify devices.
- **Chapter 5: PICSTART Plus – MPLAB Reference** – Describes PICSTART Plus dialogs and menu options.
- **Appendix A: Connecting to a 25-Pin Serial Port** – Describes how to connect PICSTART Plus to a 25-pin serial port.

PICSTART[®] Plus User's Guide

- **Appendix B: PICSTART Plus VPP Adjustment** – Describes how to change the VPP programming voltage of older PICSTART Plus hardware units to comply with revised programming specifications.
- **Appendix C: Troubleshooting** – Provides information on solving common problems.
- **Index** – Provides a cross-reference listing of terms, features, and sections of this document.
- **Worldwide Sales and Service** – Lists Microchip sales and service locations and telephone numbers worldwide.

Conventions Used in this Guide

This manual uses the following documentation conventions:

Documentation Conventions

Description	Represents	Examples
Code (Courier font):		
Plain characters	Sample code Filenames and paths	<code>#define START</code> <code>c:\autoexec.bat</code>
Angle brackets: < >	Variables	<label>, <exp>
Square brackets []	Optional arguments	MPASMWIN [main.asm]
Curly brackets and pipe character: { }	Choice of mutually exclusive arguments An OR selection	errorlevel {0 1}
Lower case characters in quotes	Type of data	"filename"
Ellipses...	Used to imply (but not show) additional text that is not relevant to the example	list ["list_option... , "list_option"]
0xnnn	A hexadecimal number where n is a hexadecimal digit	0xFFFF, 0x007A
Italic characters	A variable argument; it can be either a type of data (in lower case characters) or a specific example (in uppercase characters)	char isascii (char, ch);
Interface (Helvetica font):		
Underlined, italic text with right arrow	A menu selection from the menu bar	<i><u>File > Save</u></i>
Bold characters	A window or dialog button to click	OK, Cancel
Characters in angle brackets < >	A key on the keyboard	<Tab>, <Ctrl-C>

General Information

Documentation Conventions (Continued)

Description	Represents	Examples
Documents (Helvetica font):		
Italic characters	Referenced books	<i>MPLAB IDE User's Guide</i>

Updates

All documentation becomes dated, and this user's guide is no exception. Since the MPLAB IDE, PICSTART Plus and other Microchip tools are constantly evolving to meet customer needs, some MPLAB dialogs and/or tool descriptions may differ from those in this document. Please refer to our web site at <http://www.microchip.com> to obtain the latest documentation available.

Warranty Registration

Please complete the enclosed Warranty Registration Card and mail it promptly. Sending in your Warranty Registration Card entitles you to receive new product updates. Interim software releases are available at the Microchip web site.

Recommended Reading

This user's guide describes how to use PICSTART Plus. The data sheets contain current information on programming the specific microcontroller devices.

README.PLS

For the latest information on using PICSTART Plus, read the README.PLS file (ASCII text file) included with the PICSTART Plus software. The README.PLS file contains update information that may not be included in this document.

MPLAB IDE User's Guide (DS51025)

Comprehensive guide that describes installation and features of Microchip's MPLAB Integrated Development Environment (IDE), as well as the editor and simulator functions in the MPLAB environment.

MPASM User's Guide with MPLINK & MPLIB (DS33014)

Describes how to use Microchip Universal PICmicro Microcontroller Assembler (MPASM), Linker (MPLINK), and Librarian (MPLIB).

PICSTART[®] Plus User's Guide

Technical Library CD-ROM (DS00161)

This CD-ROM contains comprehensive data sheets for Microchip PICmicro[®] MCU devices available at the time of print. To obtain this disk, contact the nearest Microchip Sales and Service location (see back page) or download individual data sheet files from the Microchip web site (<http://www.microchip.com>).

Embedded Control Handbook (DS00711)

This handbook consists of several documents that contain a wealth of information about microcontroller applications. To obtain these documents, contact the nearest Microchip Sales and Service location (see back page).

The application notes described in these manuals are also obtainable from Microchip Sales and Service locations or from the Microchip web site (<http://www.microchip.com>).

PICmicro Mid-Range MCU Family Reference Manual (DS33023)

This manual explains the general details and operation of the MCU family architecture and peripheral modules. It is designed to complement the device data sheets.

Microsoft[®] Windows[®] Manuals

This manual assumes that users are familiar with Microsoft Windows operating system. Many excellent references exist for this software program, and should be consulted for general operation of Windows.

Troubleshooting

See Appendix C for information on common problems.

General Information

The Microchip Internet Web Site

Microchip provides online support on the Microchip World Wide Web (WWW) site.

The web site is used by Microchip as a means to make files and information easily available to customers. To view the site, the user must have access to the Internet and a web browser, such as Netscape® Communicator or Microsoft® Internet Explorer®. Files are also available for FTP download from our FTP site.

Connecting to the Microchip Internet Website

The Microchip web site is available by using your favorite Internet browser to attach to:

<http://www.microchip.com>

The file transfer site is available by using an FTP program/client to connect to:

<ftp://ftp.microchip.com>

The web site and file transfer site provide a variety of services. Users may download files for the latest Development Tools, Data Sheets, Application Notes, User's Guides, Articles, and Sample Programs. A variety of Microchip specific business information is also available, including listings of Microchip sales offices, distributors and factory representatives. Other data available for consideration is:

- Latest Microchip Press Releases
- Technical Support Section with Frequently Asked Questions
- Design Tips
- Device Errata
- Job Postings
- Microchip Consultant Program Member Listing
- Links to other useful web sites related to Microchip Products
- Conferences for products, Development Systems, technical information and more
- Listing of seminars and events

PICSTART[®] Plus User's Guide

Development Systems Customer Notification Service

Microchip started the customer notification service to help our customers keep current on Microchip products with the least amount of effort. Once you subscribe to one of our list servers, you will receive email notification whenever we change, update, revise or have errata related to that product family or development tool. See the Microchip web page at <http://www.microchip.com> for other Microchip list servers.

The Development Systems list names are:

- Compilers
- Emulators
- Programmers
- MPLAB
- Otools (other tools)

Once you have determined the names of the lists that you are interested in, you can subscribe by sending a message to:

`listserv@mail.microchip.com`

with the following as the body:

`subscribe <listname> yourname`

Here is an example:

`subscribe programmers John Doe`

To UNSUBSCRIBE from these lists, send a message to:

`listserv@mail.microchip.com`

with the following as the body:

`unsubscribe <listname> yourname`

Here is an example:

`unsubscribe programmers John Doe`

The following sections provide descriptions of the available Development Systems lists.

Compilers

The latest information on Microchip C compilers, Linkers and Assemblers. These include MPLAB-C17, MPLAB-C18, MPLINK, MPASM as well as the Librarian, MPLIB for MPLINK.

To SUBSCRIBE to this list, send a message to:

`listserv@mail.microchip.com`

with the following as the body:

`subscribe compilers yourname`

General Information

Emulators

The latest information on Microchip In-Circuit Emulators. These include MPLAB-ICE and PICMASTER.

To SUBSCRIBE to this list, send a message to:

`listserv@mail.microchip.com`

with the following as the body:

`subscribe emulators yourname`

Programmers

The latest information on Microchip PICmicro device programmers. These include PRO MATE II and PICSTART Plus.

To SUBSCRIBE to this list, send a message to:

`listserv@mail.microchip.com`

with the following as the body:

`subscribe programmers yourname`

MPLAB

The latest information on Microchip MPLAB, the Windows Integrated Development Environment for development systems tools. This list is focused on MPLAB, MPLAB-SIM, MPLAB's Project Manager and general editing and debugging features. For specific information on MPLAB compilers, linkers and assemblers, subscribe to the COMPILERS list. For specific information on MPLAB emulators, subscribe to the EMULATORS list. For specific information on MPLAB device programmers, please subscribe to the PROGRAMMERS list.

To SUBSCRIBE to this list, send a message to:

`listserv@mail.microchip.com`

with the following as the body:

`subscribe mplab yourname`

Otools

The latest information on other development system tools provided by Microchip. For specific information on MPLAB and its integrated tools refer to the other mail lists.

To SUBSCRIBE to this list, send a message to:

`listserv@mail.microchip.com`

with the following as the body:

`subscribe otools yourname`

PICSTART[®] Plus User's Guide

Customer Support

Users of Microchip products can receive assistance through several channels:

- Distributor or Representative
- Local Sales Office
- Field Application Engineer (FAE)
- Corporate Applications Engineer (CAE)
- Hotline

Customers should call their distributor, representative, or field application engineer (FAE) for support. Local sales offices are also available to help customers. See the back cover for a listing of sales offices and locations.

Corporate applications engineers (CAEs) may be contacted at (480) 786-7627.

In addition, there is a Systems Information and Upgrade Line. This line provides system users a listing of the latest versions of all of Microchip's development systems software products. Plus, this line provides information on how customers can receive any currently available upgrade kits.

The Hotline Numbers are:

1-800-755-2345 for U.S. and most of Canada, and
1-480-786-7302 for the rest of the world.



MICROCHIP

PICSTART[®] PLUS USER'S GUIDE

Chapter 1. Quick Start

1.1 Introduction

This chapter provides the limited information that experienced users of PCs and embedded application development tools need in order to quickly start using PICSTART Plus.

1.2 Highlights

Topics covered in this chapter:

- Installing MPLAB[®] IDE and PICSTART Plus
- Connecting the PICSTART Plus to your PC
- Using PICSTART Plus with MPLAB IDE
 - Enabling (starting) PICSTART Plus
 - Setting up the Device Programmer and Configuration Bits
 - Loading a Hex File
 - Checking for a Blank Device
 - Programming, Verifying, and Reading a Device

1.3 Installing MPLAB IDE and PICSTART Plus

1. PICSTART Plus is a component of the MPLAB Integrated Development Environment (IDE). To install the MPLAB IDE software, insert the MPLAB IDE installation CD and run `MPXXXX.EXE`, where `XXXX` represents the version of the MPLAB IDE software. This executable is in the root directory of the CD.
2. When the component selection window of the installation program appears, make sure PICSTART Plus is checkmarked in the list of components to install. As a minimum, install the MPLAB IDE software and MPASM/MPLINK. You should also install the MPLAB-SIM and help files. Continue with the installation by following the instructions displayed by the installation program. Under Language Components, select All.

If you previously installed the MPLAB IDE software but did not install PICSTART Plus, you must repeat the installation. You can clear all the checkmarks except PICSTART Plus.

PICSTART[®] Plus User's Guide

1.4 Connecting PICSTART Plus to Your PC

Follow these steps to connect the PICSTART Plus to your PC.

WARNING



DO NOT connect power with a device in the socket. Damage to the device may result.

1. Use the RS-232 communications cable to connect the PICSTART Plus to an available COM port on your PC.
2. Install the power supply.

You are now ready to start using PICSTART Plus with the MPLAB IDE.

1.5 Using PICSTART Plus with MPLAB IDE

1.5.1 Starting PICSTART Plus

1. Start the MPLAB IDE by double-clicking the MPLAB desktop icon or by selecting *Programs > Microchip MPLAB > MPLAB* from your Start menu.
2. Select *Options > Programmer Options > Communications Port Setup* from the MPLAB menu. Select the COM port that the PICSTART Plus is on.
3. If the PICSTART Plus menu item is not on the MPLAB menu, you must select the PICSTART Plus programmer. In the MPLAB desktop, select *Options > Programmer Options > Select Programmer*. Select PICSTART Plus Device Programmer and click **OK**. A message will prompt you to restart the MPLAB software in order for the change to take effect. Click **Yes**. The MPLAB IDE will shut down, and the PICSTART Plus menu will appear on the MPLAB menu when you restart the MPLAB IDE software.
4. Select *Options > Development Mode*. Select the MPLAB-SIM or Editor Only development mode and select the device you are going to program. Click **OK**.
5. Select *PICSTART Plus > Enable Programmer* from the MPLAB menu. The MPLAB IDE will attempt to establish communications with the PICSTART Plus, and the Program Memory window, as well as the PICSTART Plus Device Programmer and Configuration Bits dialogs will appear.

Quick Start

1.5.2 Setting up the Device Programmer and Configuration Bits

The PICSTART Plus Device Programmer dialog is open whenever the programmer is enabled. Closing this dialog disables the programmer.

1. Make sure the correct device is displayed. If the device you want to program is not listed, you may need to upgrade your PICSTART Plus operating system (see Section 6.9). You may only need to upgrade to the latest version of the MPLAB IDE software.
2. If you want to identify the programming on a device (e.g., version control), click **Device ID** and edit the device ID or select unprotected checksum. Click **OK**.
3. Set the configuration bits in the Configuration Bits dialog. If you set configuration bits in your source code, this dialog will be updated with those values when you rebuild your project. The values in this dialog will be programmed into the device you program.

If the Configuration Bits dialog is not visible, click **Configuration Bits** in the PICSTART Plus Device Programmer dialog to reopen it.

1.5.3 Loading a Hex File

If you have a hex file ready for programming into a device, select *File > Import > Import to Memory* to load the hex code into the MPLAB Program Memory window. Select *Window > Program Memory* to view the contents of program memory.

1.5.4 Checking for a Blank Device

Insert the device to be programmed into the PICSTART Plus socket.

Click **Blank** in the PICSTART Plus Device Programmer dialog to verify that the device is blank (all bits set to '1').

If you are programming a one-time programmable (OTP) device, use the Configuration Bits dialog to set the configuration bits to their factory settings. Select *PICSTART Plus > Blank Check OTP* to make sure that all program memory bits are set to '1' and that the configuration bits match the value in the Configuration Bits dialog.

PICSTART[®] Plus User's Guide

1.5.5 Programming, Verifying, and Reading a Device

If you have followed the previous sections, you are ready to program a device. To program the entire device, click **Program** in the PICSTART Plus Device Programmer dialog.

Note: If you are programming a windowed calibration device, be sure to store its calibration data as described in Section 4.3.3.4, to ensure proper operation of the device.

To program selectively (part of program memory or configuration bits) select *PICSTART Plus > Program/Verify*. Select the memory range and items to be programmed, and click **Program** in the Program/Verify dialog.

When programming has completed, "Success" or "Failure" will appear to the right of the Start Address. An error window displaying the expected and actual data will appear if programming failed.



MICROCHIP

PICSTART[®] PLUS USER'S GUIDE

Chapter 2. PICSTART Plus Preview

2.1 Introduction

This chapter will present an overview of the PICSTART Plus development programmer. The features and requirements of PICSTART Plus are presented.

2.2 Highlights

Topics covered in this chapter:

- What is PICSTART Plus
- Components of PICSTART Plus System
- PICSTART Plus CE Compliance
- How PICSTART Plus Helps You
- MPLAB Integrated Development Environment
- MPLAB Development Tools

2.3 What is PICSTART Plus

The PICSTART Plus is a Microchip microcontroller development programmer that enables you to program user software into PICmicro microcontroller (MCU) devices (DIP packages only—adapters available for PIC16C9XX and PIC17C7XX devices).

Note: The PICSTART Plus development system is designed for use in firmware development and is not intended for production use.

PICSTART[®] Plus User's Guide

2.4 Components of PICSTART Plus System

The PICSTART Plus device programmer system consists of the following:

1. PICSTART Plus device programmer
2. RS-232 Interface cable to connect to any standard PC serial port
3. MPLAB IDE software, an Integrated Development Environment including a text editor, project manager, MPASM assembler, and MPLAB-SIM simulator
4. Blank chips for programming
5. 9V power supply (not shown)



Figure 2.1: PICSTART Plus System

2.5 PICSTART Plus CE Compliance

The PICSTART Plus development system is designed, tested, and certified to meet the Electromagnetic Compatibility requirements known as the CE compliance directives. These standards set by the European Union (EU) countries include limiting radiated emission, reducing susceptibility to radiated emission, and reducing susceptibility to Electrostatic Discharge (ESD).

PICSTART Plus Preview

2.6 How PICSTART Plus Helps You

PICSTART Plus device programmer system has the following features:

- Programs PICmicro MCUs, including program memory, configuration bits, and ID locations.
- Communicates with the PC via a standard RS-232 cable.
- Operates as a Microsoft® Windows® application on a PC-compatible host system within the MPLAB Integrated Development Environment.
- With the MPLAB IDE, you can create, display, and edit files to be programmed into PICmicro MCUs.

In addition, you can verify that the PICmicro MCUs are blank and verify that the code in the target microcontroller matches your firmware. You can also read code from an unprotected PICmicro MCU into the MPLAB IDE's program memory window for debugging and programming into other PICmicro devices.

2.7 MPLAB Integrated Development Environment

The MPLAB IDE desktop provides an integrated development environment (IDE) for developing and debugging your application. PICSTART Plus is integrated into the MPLAB IDE.

This document covers the basic setup and operation of the PICSTART Plus device programmer, but it does not cover all functions of the MPLAB IDE. Read the *MPLAB IDE User's Guide* (DS51025) to get a full understanding of the features and debugging capabilities of the MPLAB IDE.

PICSTART[®] Plus User's Guide

2.8 MPLAB Development Tools

The MPLAB IDE integrates several tools to provide a complete development environment.

- **MPLAB Project Manager**

Use the Project Manager to create a project and work with the specific files related to the project. When using a project, you can rebuild source code and download it to the simulator or emulator with a single mouse click.

- **MPLAB Editor**

Use the MPLAB Editor to create and edit text files such as source files, code, and linker script files.

- **MPLAB-SIM Simulator**

The software simulator models the instruction execution and I/O of the PICmicro MCUs.

- **MPLAB-ICE Emulator**

The MPLAB-ICE emulator uses hardware to emulate PICmicro MCUs in real time, either with or without a target system.

- **MPASM Assembler/MPLINK Linker/MPLIB Librarian**

The MPASM assembler allows source code to be assembled without leaving MPLAB. MPLINK creates the final application by linking relocatable modules from MPASM, MPLAB-C17, and MPLAB-C18. MPLIB manages custom libraries for maximum code reuse.

- **MPLAB-CXX C Compilers**

The MPLAB-C17 and MPLAB-C18 C Compilers provide ANSI-based high level source code solutions. Complex projects can use a combination of C and assembly source files to obtain the maximum benefits of speed and maintainability.

- **PRO MATE[®] II and PICSTART Plus Programmers**

Develop code with the simulator or an emulator, assemble or compile it, and then use one of these tools to program devices. This can all be accomplished with the MPLAB IDE. Although PRO MATE II does not require the MPLAB IDE to operate, programming is easier using the MPLAB IDE.

- **Third Party Tools**

Many other companies have development tools for Microchip products that work with the MPLAB IDE. Consult the *Microchip Third Party Guide* (DS00104).



MICROCHIP

PICSTART[®] PLUS USER'S GUIDE

Chapter 3. PICSTART Plus Installation

3.1 Introduction

The PICSTART Plus development system requires connecting the hardware to the PC as well as the installation of the MPLAB IDE software. This chapter covers the details of both hardware and software installation.

3.2 Highlights

Topics covered in this chapter:

- Host Computer System Requirements
- Installing PICSTART Plus Hardware
- Installing MPLAB IDE Software
- Starting MPLAB IDE
- Configuring the Serial Port for PICSTART Plus
- Setting Up the MPLAB IDE Development Mode
- Starting PICSTART Plus

3.3 Host Computer System Requirements

The following minimum configuration is required to run the MPLAB IDE:

- Pentium[®] class PC
- Microsoft Windows 3.x, Windows 95/98, Windows NT[®], or Windows 2000[®]
- 16 MB memory (32 MB recommended)
- 45 MB of hard disk space
- One serial port

3.4 Installing PICSTART Plus Hardware

The PICSTART Plus hardware is simple to set up. First, the communications cable is attached, and then the power supply is connected.

3.4.1 Installing the Cable

PICSTART Plus provides communications with the host PC via an RS-232 9-pin, D type connector. PICSTART Plus is Data Communication Equipment (DCE), and hardware handshaking is via Clear-To-Send (CTS) and Request-To-Send (RTS).

PICSTART[®] Plus User's Guide

A 6-foot data cable with DB-9 connectors is supplied with PICSTART Plus. All lines on the data cable are wired straight through. This cable is NOT a null modem cable.

- Connect one end of the cable to an available COM port on your PC. Check your PC set up to see which communications port is available. Usually a mouse device is connected to COM1 or COM2. If you have a modem, you might not have a third serial port on your PC.
- Connect the cable from your COM port to the PICSTART Plus development programmer.

3.4.2 Installing the Power Supply

The PICSTART Plus comes with a 9V input power supply.

PICSTART Plus requires +9 volts $\pm 10\%$ at 500 mA (max.) on the center positive 2.5 mm terminal.

- Plug the power supply into a power socket and connect the power supply cable to the PICSTART Plus.

WARNING



DO NOT connect power with a device in the socket. Damage to the device may result.

PICSTART Plus Installation

3.5 Installing MPLAB IDE Software

Install the MPLAB IDE software by following the instructions in the *MPLAB IDE User's Guide* (DS51025). A brief summary of this procedure, as well as how to obtain and install the PICSTART Plus upgrades, is discussed in the next sections.

3.5.1 Installation Summary

Refer to the *MPLAB IDE User's Guide* for more detailed instructions.

- Insert the MPLAB IDE CD-ROM into your CD-ROM drive (Example: drive D).
- Run the Setup program.
 - **For Windows 3.x/NT 3.51:** From the Program Manager Run option, type **D:\setup.exe**.
 - **For Windows 95/98, Windows NT 4.0, or Windows 2000:** From the Start menu, select **Run**. In the Run dialog, type **D:\setup.exe** (assuming that D is your computer's CD-ROM drive).
- Follow the on-screen instructions to install the MPLAB IDE. Be sure the checkbox to install PICSTART Plus is checked (Figure 3.1).

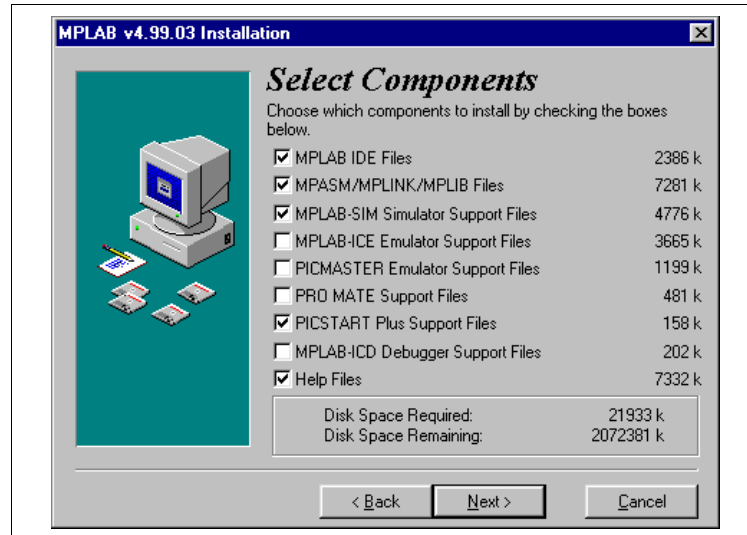


Figure 3.1: Select Components Dialog

PICSTART[®] Plus User's Guide

3.6 Starting MPLAB IDE

Once the MPLAB IDE is installed on your PC, you run it by one of the following methods:

- **For Windows 3.x/NT 3.51:** Double-click on the MPLAB icon.
- **For Windows 95/98, Windows NT 4.0, or Windows 2000:** From the Start menu, select *Programs > Microchip MPLAB > MPLAB*.

The MPLAB desktop should look like Figure 3.2.

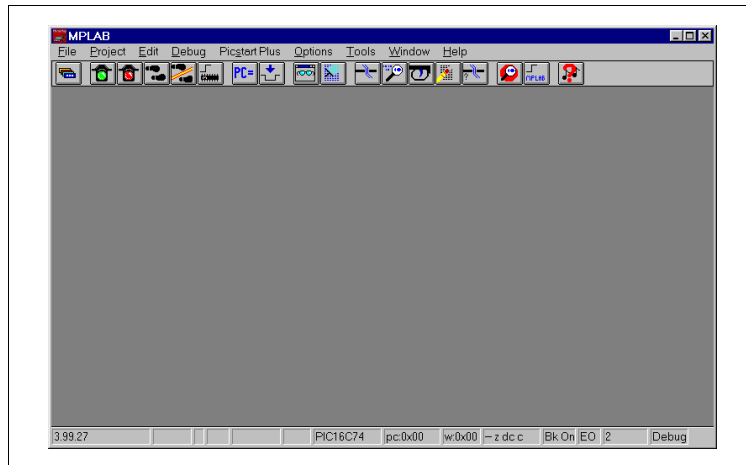


Figure 3.2: MPLAB Desktop

PICSTART Plus Installation

3.7 Configuring the Serial Port for PICSTART Plus

From the MPLAB IDE, select *Options > Programmer Options > Communications Port Setup*. A dialog similar to the one shown in Figure 3.3 will appear.

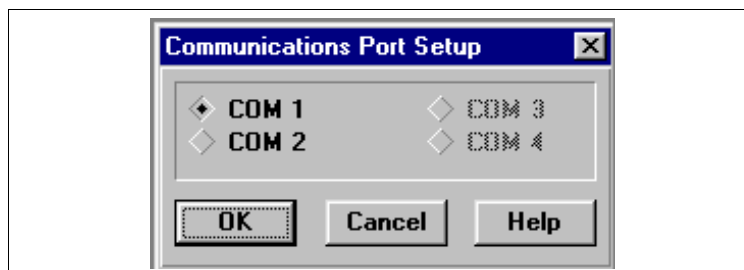


Figure 3.3: Communications Port Setup Dialog

The Communications Port Setup Dialog shows the possible PC serial communication ports. Select the COM port to which you connected the PICSTART Plus, and click **OK**. The MPLAB IDE will attempt to contact PICSTART Plus to verify the port. Click **Cancel** if you want to close the dialog without selecting a COM port.

If PICSTART Plus is not found on the selected COM port, the dialog shown in Figure 3.4 appears.



Figure 3.4: Communications Error Dialog

Clicking **No** will retain the new COM port setting without trying to contact PICSTART Plus again. Clicking **Yes** will cause the MPLAB IDE to try again to contact PICSTART Plus on the specified COM port.

If you cannot establish communications between the PC and PICSTART Plus, make sure you have installed the hardware and software correctly (see Chapter 3). If you still cannot establish communications between the PC and PICSTART Plus, please see Appendix C.

PICSTART[®] Plus User's Guide

3.8 Setting Up the MPLAB Development Mode

Select *Options > Development Mode* and click the **Tools** tab to change the current Development Mode setting and select a processor module or device.

To view complete information on the inherent limitations of the device in the development mode you've selected, click **Details**. Scroll to the device and double-click on it to view the details. Note that this feature does not apply if you are in None (Editor Only) mode.

To see which device your emulator is configured for, make sure that the correct tool (MPLAB-ICE or PICMASTER) is selected, click **Inquire**. The device will appear in the Processor box.

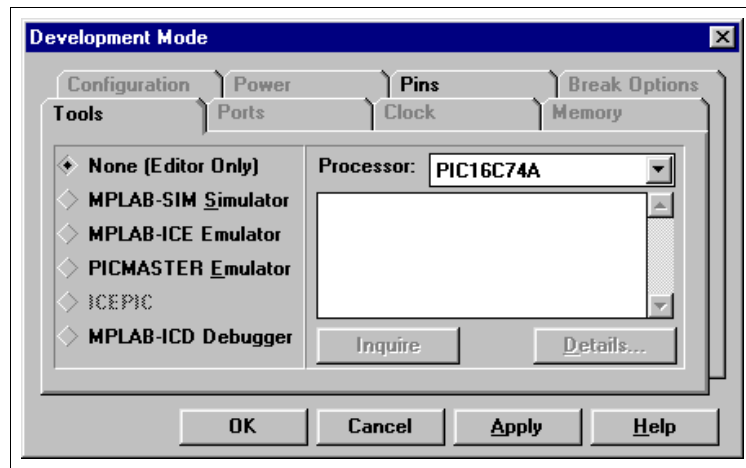


Figure 3.5: Development Mode Dialog

If you are going to use the MPLAB IDE to develop your firmware, you may choose from the following modes:

- None (Editor Only) – to write your source code and then assemble or compile it into a hex file. Select the relevant Processor from the pull-down list.
- MPLAB-SIM Simulator – to write your source code, assemble or compile it into a hex file, and then simulate the PICmicro MCU program execution via a simulator. Select the relevant Processor from the pull-down list.
- MPLAB-ICE, PICMASTER, or ICEPIC Emulator – to write your source code, assemble or compile it into a hex file, and then emulate the PICmicro MCU program execution via an emulator. The MPLAB IDE will select the relevant processor from the hardware. Click the **Ports** tab to select the I/O port for emulator communication.

PICSTART Plus Installation

- MPLAB-ICD Debugger – to write your source code, assemble or compile it into a hex file, then debug the PICmicro MCU code via a debugger. Select the relevant Processor from the pull-down list. Click **Apply** to display the MPLAB-ICD dialog and select any applicable communication port options.

If you already have hex code that you wish to program into a device, select Editor Only for the development mode and choose your desired processor (device) for programming from the pull-down list. Click **OK**.

Refer to the *MPLAB IDE User's Guide* for more information on developing firmware using the MPLAB IDE. When you have finished your development mode selections, click **OK**.

3.9 Starting PICSTART Plus

To enable PICSTART Plus, select the PICSTART Plus menu and click **Enable Programmer** (Figure 3.6). The PICSTART Plus Device Programmer dialog and the Configuration Bits dialog will appear when the programmer is enabled. If these dialogs appear, refer to Section 6.8 for an overview of PICSTART Plus menu item functions, then read Chapter 5 for information on using the PICSTART Plus programmer.

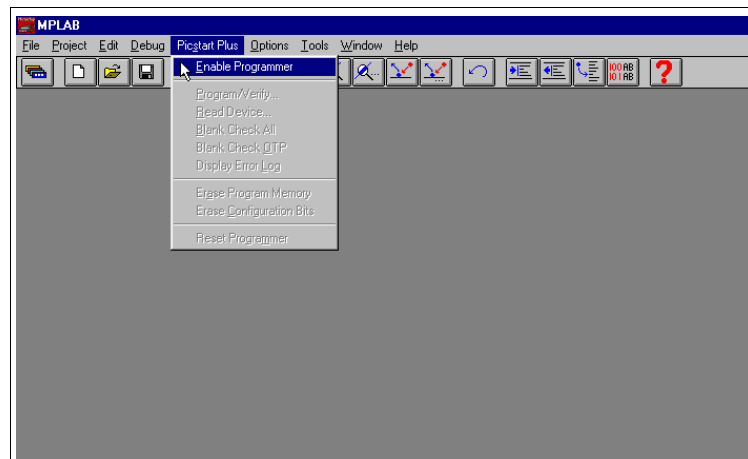


Figure 3.6: PICSTART Plus Programmer Pull-Down Menu

PICSTART[®] Plus User's Guide

If you have been using another programmer (e.g., PRO MATE II), the PICSTART Plus menu might not be available. Select Options > Programmer Options > Select Programmer to open the Select Programmer dialog, and choose PICSTART Plus from the list. After you select the programmer, the MPLAB IDE will issue you a warning prompt and shut itself down. You must restart the MPLAB IDE before the programmer options are available. The PICSTART Plus menu will appear on the menu bar when you restart the MPLAB IDE software.

Once the programmer is enabled, this menu item will change to **Disable Programmer** and can be used to disable PICSTART Plus.

If the device you selected when setting up the development mode in the MPLAB IDE, is not supported by the PICSTART Plus operating system, a message box will appear when you try to enable the programmer.

Where possible, new device support on a previous version of the PICSTART Plus operating system is provided. However, some new devices require updates to the PICSTART Plus operating system. Instructions on upgrading the operating system are listed in Section 6.9. Because the upgrade will require you to program a (supported) device, read Section 5.3 before upgrading the operating system.



MICROCHIP

PICSTART[®] PLUS USER'S GUIDE

Chapter 4. Programming Examples

4.1 Introduction

The tutorials in this chapter lead you through the steps involved in programming the following PICmicro MCU devices:

- PIC16F84
- PIC12C508A

4.2 Example: Programming a Mid-Range PICmicro MCU Device

This example leads you through the steps involved in programming the PIC16F84, one of Microchip's most popular PICmicro MCU devices.

4.2.1 Programming Overview – Mid-Range PICmicro MCU Devices

Programming a mid-range PICmicro MCU device involves the following steps:

- Configuring the Serial Port for PICSTART Plus
- Setting up the MPLAB Development Mode
- Creating the MPLAB Project and Assembly Code
- Building the Hex File
- Enabling PICSTART Plus
- Setting up the PICSTART Plus Device Programmer Dialog
- Setting the Configuration Bits
- Programming the Device
- Verifying the Programming

4.2.2 Before You Begin

Before you can begin this tutorial, you must install the PICSTART Plus hardware (Section 3.4) and the MPLAB IDE software (Section 3.5). Make sure you have read and completed the instructions in Section 3.6 through Section 3.9. Make sure that your PC and PICSTART Plus are communicating and the PICSTART Plus menu item appears on the MPLAB menu before you begin this tutorial.

PICSTART[®] Plus User's Guide

4.2.3 Setting Up the MPLAB Development Mode

Select *Options > Development Mode* to open the Development Mode dialog (Figure 4.1) and select a processor module or device.

Under Tools, select None (Editor Only). Select the PIC16F84 device, and click **OK**.

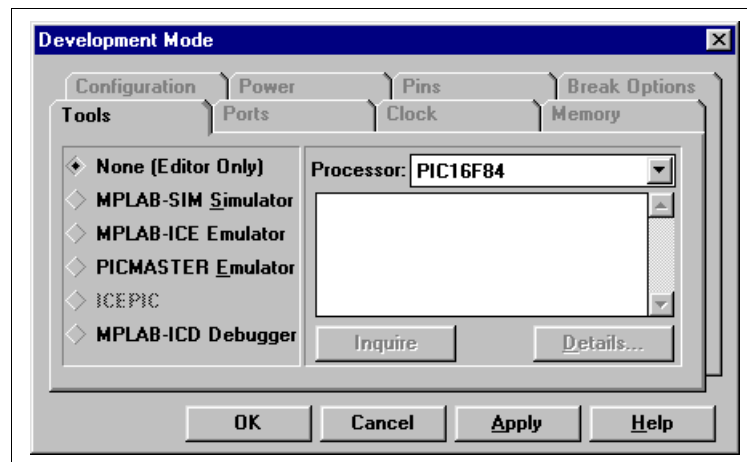


Figure 4.1: Setting the Development Mode

Programming Examples

4.2.4 Creating the MPLAB Project and Assembly Code

In order to program the device, you need a hex file. In this example, you'll create your own source code and compile it into a hex file using MPLAB Projects.

4.2.4.1 Creating the Project

Select *Project > New Project*. Name the new project psp16f84 and select the drive and directory you want to store it in. In this example, use the MPLAB directory. Click **OK**.

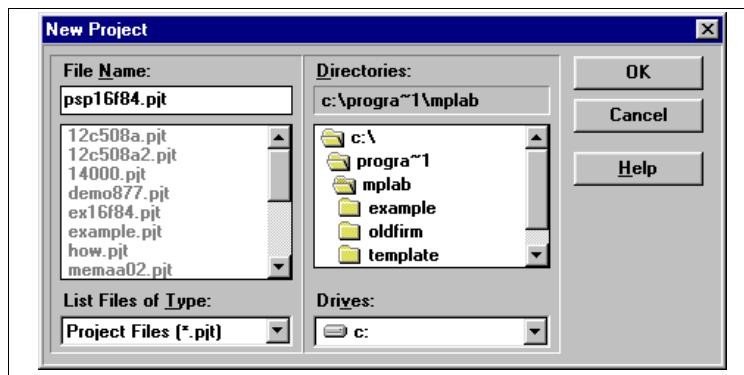


Figure 4.2: Creating a Project

The Edit Project dialog will appear. It should show the Editor Only development mode and the PIC16F84 device. The name of the hex file that this project will create appears in the Project Files area.

PICSTART® Plus User's Guide

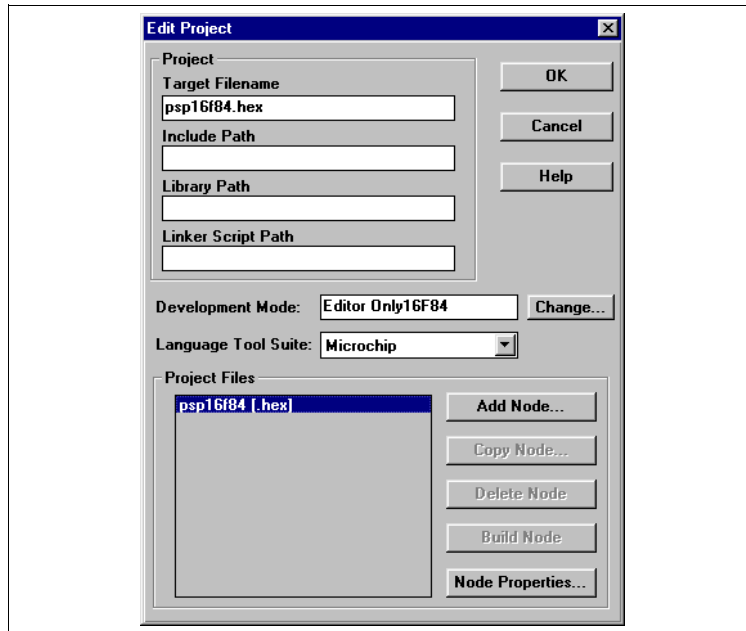


Figure 4.3: Edit Project Dialog

Select the hex file psp16f84 .hex and click **Add Node**.

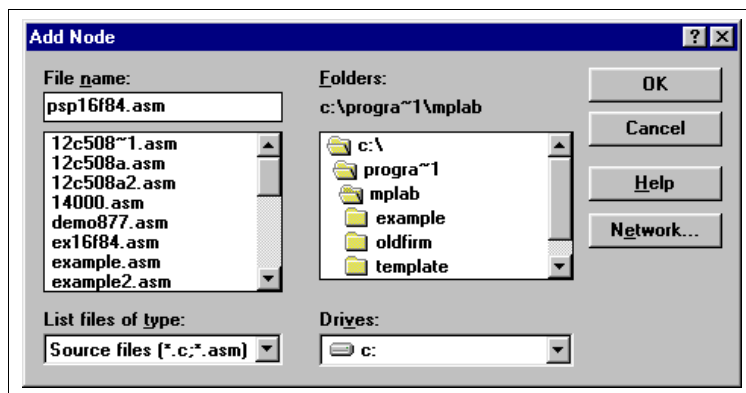


Figure 4.4: Adding the Assembly File

Type psp16f84 .asm in the File name box and click **OK**. The file psp16f84 .asm appears below psp16f84 .hex in the Project Files list in the Edit Project dialog.

Click **OK** to close the Edit Project dialog. Select *Project > Save Project* to save your project.

Programming Examples

4.2.4.2 Creating the Assembly Code

At this point, you still need to create the source code that you will assemble to create your hex file. Select *File > New*. An Untitled source code window will open on your MPLAB desktop.

For this example, you will use the same source code that is in the file `sample.asm`. Select *File > Open* and open `sample.asm`. It is included with the standard MPLAB IDE installation and is located in the MPLAB directory.

```

c:\progra~1\mplab\sample.asm
*****
:          SAMPLE.ASM
:          8x8 Software Multiplier for 16Cxxx Family
:          *****
:
:          The 16 bit result is stored in 2 bytes
:
:          Before calling the subroutine " mpy ", the multiplier should
:          be loaded in location " mulplr ", and the multiplicand in
:          " mulcnd ". The 16 bit result is stored in locations
:          H_byte & L_byte.
:          *****
LIST      p=16F84 ; PIC16F844 is the target processor
#include "P16F84.INC" ; Include header file

cblock 0x10 ; Temporary storage
mulcnd   ; 8 bit multiplicand
mulplr   ; 8 bit multiplier, this register will be set to zero after multiply
H_byte   ; High byte of the 16 bit result
L_byte   ; Low byte of the 16 bit result
    
```

Figure 4.5: Copying Source Code from `sample.asm`

Use the MPLAB Editor to copy the source code in the `sample.asm` window. Then select the Untitled source code window and paste the code into it.

When you are finished placing the source code in the Untitled window, save your file. Select *File > Save As* and specify the name `psp16f84.asm`.

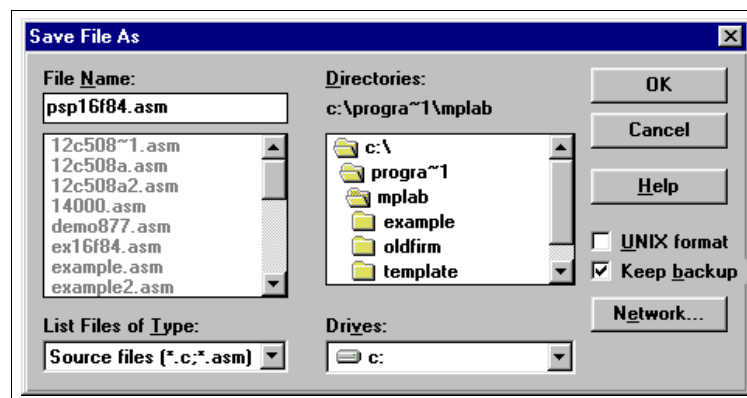


Figure 4.6: Saving Your Source File

PICSTART[®] Plus User's Guide

4.2.5 Building the Project's Hex Code

Now, build the project and create the hex file. Select *Project > Build All*.

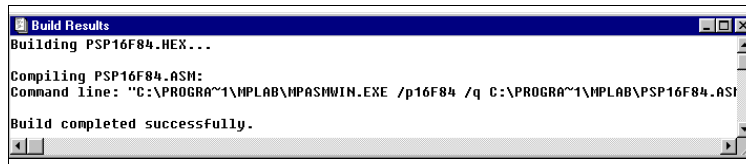


Figure 4.7: Build Results Window

4.2.6 Starting PICSTART Plus

To enable PICSTART Plus, select *PICSTART Plus > Enable Programmer* from the MPLAB menu. The PICSTART Plus Device Programmer dialog and Configuration Bits dialog will appear when the programmer is enabled. The Program Memory will also open, and will display the hex file you built. If the Program Memory window did not open, select *Window > Program Memory* to open it. You can resize and move the Program Memory window on your display. You may wish to close the Build Results window.

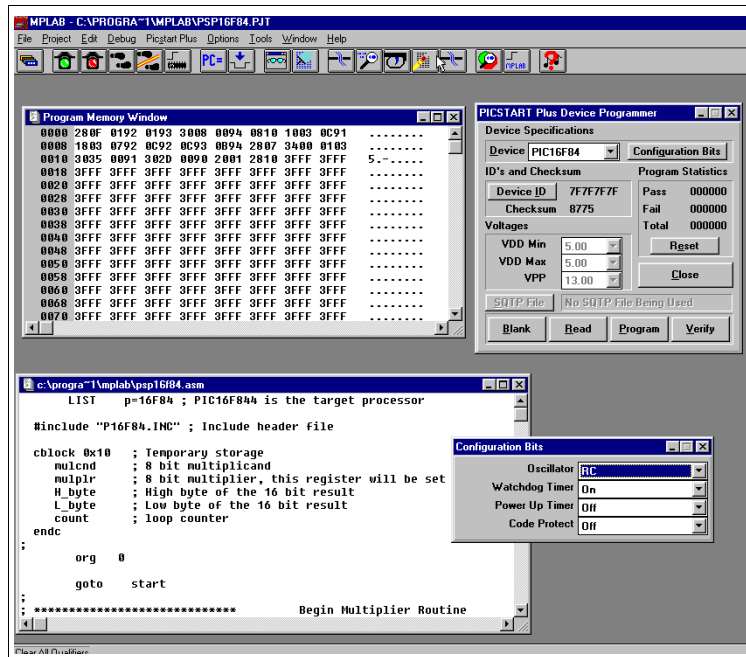


Figure 4.8: Desktop with PICSTART Plus Enabled

Programming Examples

4.2.6.1 The PICSTART Plus Device Programmer Dialog

The PICSTART Plus Device Programmer dialog must remain open during your programming session.



Figure 4.9: Device Programmer Dialog – PIC16F84

The Device ID is useful for tracking the version of firmware on a device once it is code protected. The calibration memory tutorial incorporates instructions on using this feature (see Section 4.3.3).

You'll use the **Read**, **Blank** Check, **Program**, and **Verify** buttons to perform those functions on an entire device.

4.2.6.2 Configuration Bits Dialog

The Configuration Bits dialog opens when you enable the programmer. If you close the Configuration Bits dialog, you can click **Configuration Bits** in the PICSTART Plus Device Programmer dialog to reopen it.

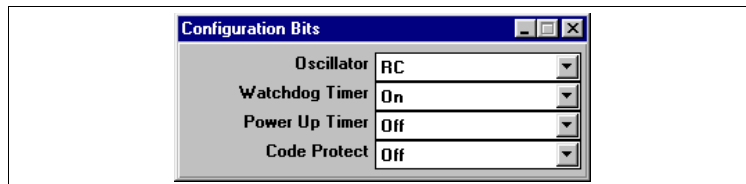


Figure 4.10: Setting Configuration Bits

PICSTART[®] Plus User's Guide

4.2.6.3 The Program Memory Window

The MPLAB Program Memory window displays the hex code that you will program onto the PIC16F84 device. If the Program Memory window is not open, select *Window > Program Memory* to open it. If your Program Memory window does not look similar to Figure 4.11, click the system icon (to the left of the window's title) and select Hex Code Display. The window displays the hex values and the ASCII text from the source code.

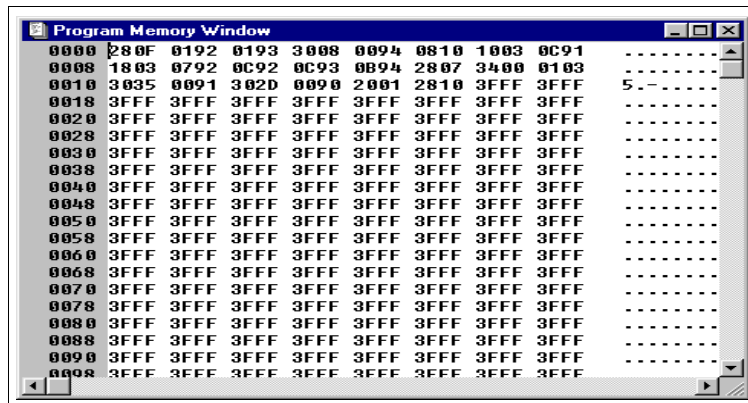


Figure 4.11: PIC16F84 Code in Program Memory

Programming Examples

4.2.7 Programming the Device

Now that the data is in program memory, you can program the device. Click **Program** in the PICSTART Plus Device Programmer dialog. A window will indicate the progress, and will indicate success or failure when finished.

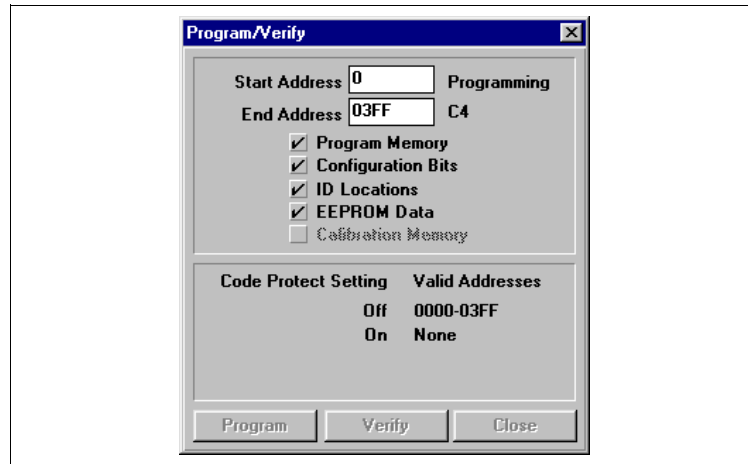


Figure 4.12: Programming the PIC16F84

4.2.8 Verifying the Programming

Click **Verify** to double-check the programming in the device. If any address locations on the device do not match program memory, an error log will display the discrepancies.

PICSTART[®] Plus User's Guide

4.3 Example: Programming Calibration Devices

The two-part tutorial in this section leads you through the steps involved in programming devices that have been supplied by the factory with calibration memory.

This two-part example provides step-by-step instructions for initially programming and reprogramming a windowed PIC12C508A calibration memory device.

4.3.1 Calibration Programming Process Overview

The steps required to initially program a new, unprogrammed calibration memory device are:

- Configuring the Serial Port for PICSTART Plus
- Setting Up the MPLAB Development Mode
- Enabling PICSTART Plus
- Preparing for Programming a Device
 - Storing Calibration Data to a File
 - Checking the Device and Setting the Device ID or Checksum
 - Checking the Configuration Bit Settings
 - Loading the Hex File to be Programmed
- Programming the Device
- Verifying the Programming

The steps required to reprogram an erased windowed calibration memory device are:

- Configuring the Serial Port for PICSTART Plus
- Setting Up the MPLAB Development Mode
- Enabling PICSTART Plus
- Preparing for Programming a Device
 - Checking the Device and Setting the Device ID or Checksum
 - Checking the Configuration Bit Settings
 - Loading the Hex File to be Programmed
 - Restoring the Calibration Data from a File
- Reprogramming the Device
- Verifying the Programming

4.3.2 Before You Begin

Before you can begin this tutorial, you must install the PICSTART Plus hardware (Section 3.4) and MPLAB IDE software (Section 3.5). Make sure you have read and completed the instructions in Section 3.6 through Section 3.9. Make sure that your PC and PICSTART Plus are communicating and the PICSTART Plus menu item appears on the MPLAB menu before you begin this tutorial.

Programming Examples

4.3.3 PIC12C508A Example Part 1: Initial Programming of a Windowed Calibration Memory Device

4.3.3.1 Setting Up the MPLAB Development Mode

Select *Options > Development Mode* to open the Development Mode dialog (Figure 4.13).

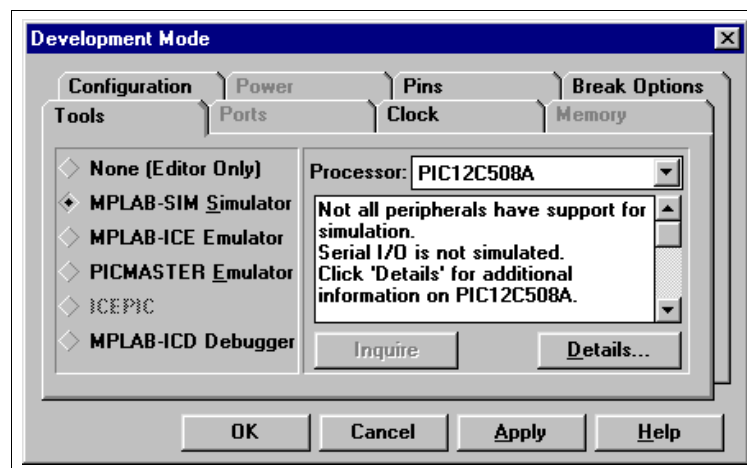


Figure 4.13: Development Mode Dialog

Select the MPLAB-SIM Simulator development mode. Select the PIC12C508A processor.

Note: When working with calibration memory, it is important that the MPLAB IDE *not* be in Emulator mode. This ensures that the calibration data is correctly loaded from the device or file, rather than from the emulator probe.

4.3.3.2 Changing the Environment Settings

A default setting in the MPLAB IDE clears all memory on download. You don't want to do that when working with a device with calibration memory, because you want to preserve that memory in the device. Select *Options > Environment Setup*. Locate the Global Switches area in the **General** tab of the Development Mode dialog. Remove the check mark in the Clear Memory on Download check box. Select **OK** or **Apply**.

PICSTART[®] Plus User's Guide

4.3.3.3 Starting PICSTART Plus

To enable PICSTART Plus, select **Enable Programmer** from the PICSTART Plus menu.

The PICSTART Plus Device Programmer dialog (Figure 4.17) and the Configuration Bits dialog (Figure 4.19) are displayed whenever the programmer is enabled.

4.3.3.4 Storing Calibration Data

Calibration parts such as the PIC12C508A are calibrated at the factory with the calibration parameters stored in a special section of program memory. When you erase a windowed device (/JW) in order to reprogram it, you also erase its calibration data. In order for the device to operate properly once it is reprogrammed, you must restore that individual device's calibration data. The device may not operate properly if you use another individual device's calibration data.

Before you program a windowed device for the first time, store its calibration data in a hex file on your PC.

This tutorial will use a PIC12C508A device. Number it with a small label. For this tutorial, label the part "A."

1. Before you place your device in the PICSTART Plus socket, select *PICSTART Plus > Erase Program Memory*. This sets all bits in the Program Memory, Data Memory, and Calibration Memory windows to '1'.
2. Insert the part that you labeled "A" in the PICSTART Plus.
3. Click **Read** in the PICSTART Plus Device Programmer dialog to read the device.

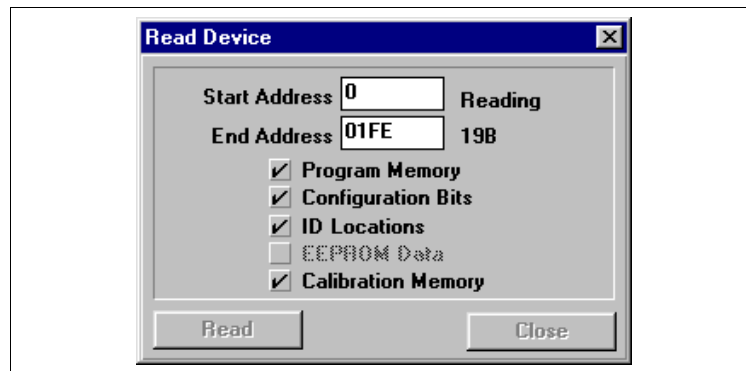


Figure 4.14: Reading the Device

Programming Examples

4. Select *Window > Calibration Data* to see the calibration information that was uploaded from the device to the MPLAB IDE. Click **OK**.

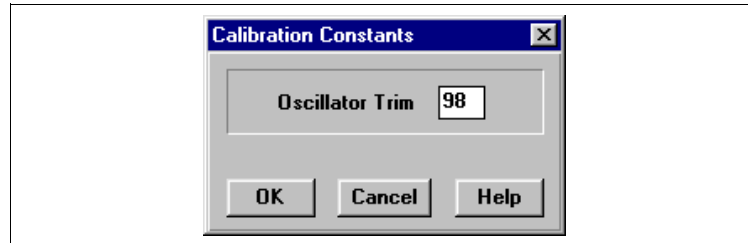


Figure 4.15: Calibration Data

5. Now that the device's calibration data is in memory, make a note of the setting and save it to a file for later use. Select *File > Export > Export Memory*. Check only the checkbox labeled "Calibration memory." Clear the Program memory, Configuration bits, and IDs check boxes. Name the file `calib-a.hex` so that you will be able to match the file to the part that is in the socket now. Click **OK**.

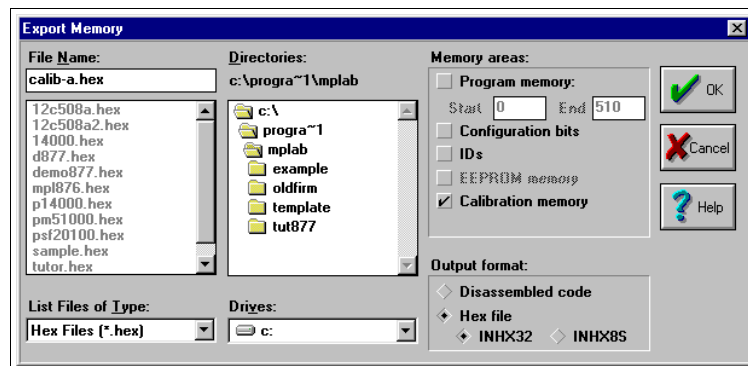


Figure 4.16: Saving Calibration Data

If you had several new windowed parts that you wanted to program, you would repeat this procedure for each one, being careful to name each calibration hex file after the correct part.

PICSTART® Plus User's Guide

4.3.3.5 Setting Up the Device Programmer Dialog

The PICSTART Plus Device Programmer dialog (Figure 4.17) is always open when PICSTART Plus is enabled. Closing this dialog will disable the programmer.

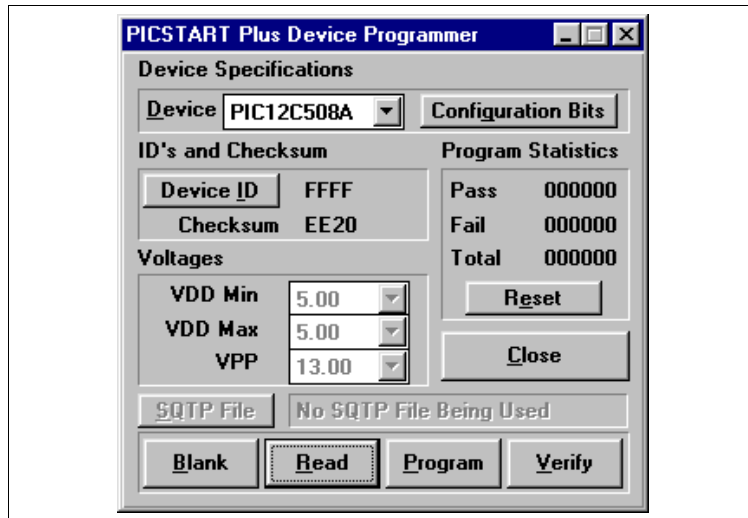


Figure 4.17: PICSTART Plus Device Programmer Dialog

The Device box shows the PIC12C508A device that you selected when you set up the development mode.

Click **Device ID**. Enter 0001. This will allow you to identify the version of firmware on the device after it is programmed and code-protected. Click **OK**.

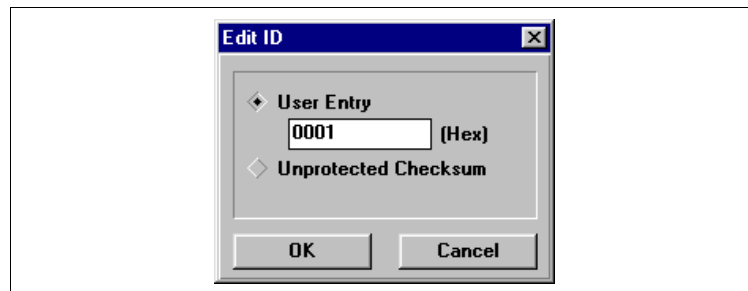


Figure 4.18: Using Device ID to Identify Firmware or Other Information

Programming Examples

4.3.3.6 Setting Up the Configuration Bits Dialog

The Configuration Bits dialog (Figure 4.19) opens when PICSTART Plus is enabled. If you closed the Configuration Bits dialog, reopen it by clicking **Configuration Bits** in the PICSTART Plus Device Programmer dialog.

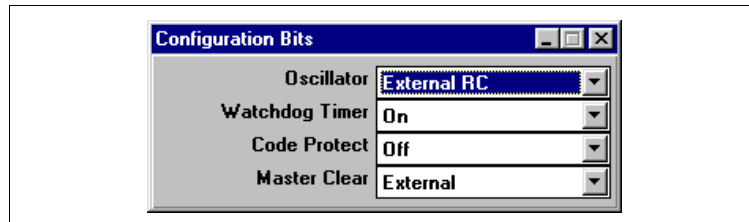


Figure 4.19: Configuration Bits Dialog – PIC16F84

Use the default values for the configuration bits. Make sure Code Protect is Off.

4.3.3.7 Loading the Hex File to be Programmed

Now that you have saved the calibration data to a hex file, load the file to be programmed. Select *File > Import > Import to Memory* to load the hex code into the MPLAB Program Memory window. Select `12c508a.hex`. It is included in the MPLAB installation.

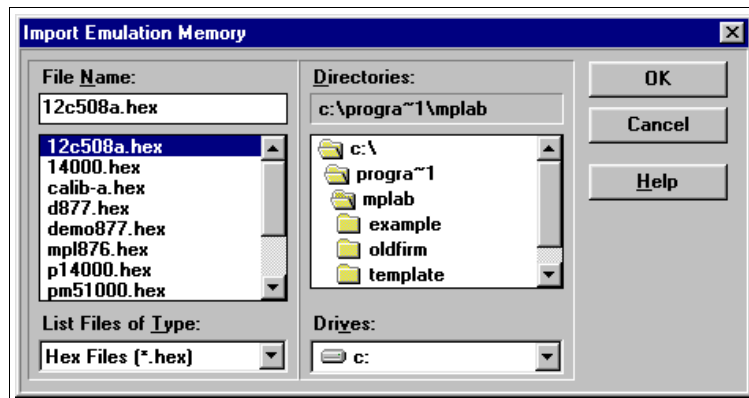


Figure 4.20: Download Emulation Memory Dialog

PICSTART[®] Plus User's Guide

The Program Memory window should now contain the hex code from the hex file (Figure 4.21). If the Program Memory window is not open, select Window > Program Memory to open it.

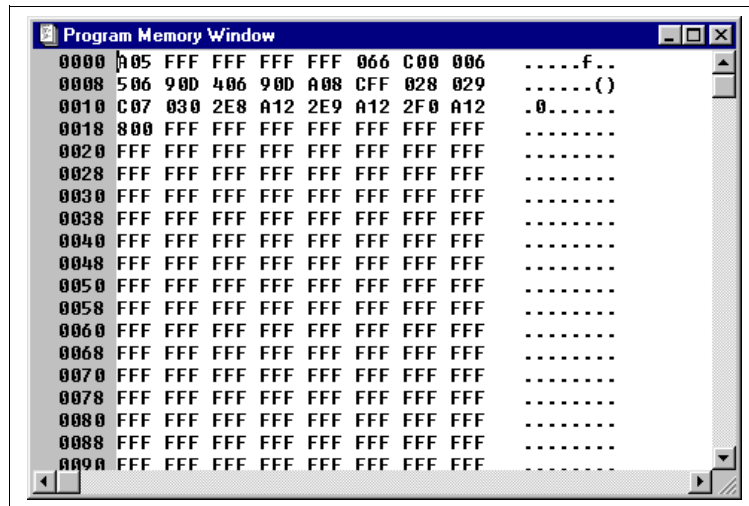


Figure 4.21: 12c508a.hex in Program Memory – Hex Code Display

Programming Examples

4.3.3.8 Programming a Calibration Device

Click **Program** in the PICSTART Plus Device Programmer dialog to program the entire device (all of program memory, configuration bits, etc.).

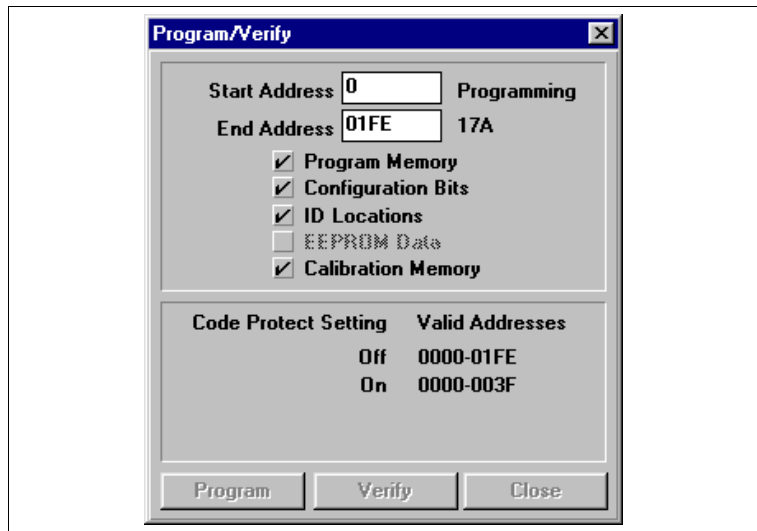


Figure 4.22: Programming the PIC12C508A

The Program/Verify dialog will appear while the device is being programmed. The areas being programmed are automatically selected based on the device.

When the programming is finished, "Success" or "Failure" will appear to the right of the Start Address. If the programming failed, an error window will appear showing the good (expected) data and the bad (actual) data for each address it attempted to program.

PICSTART[®] Plus User's Guide

4.3.3.9 Verifying the Programming

Now that you have programmed a device, click **Verify** in the PICSTART Plus Device Programmer dialog to verify that the contents of the device match the values shown in the Program Memory window and PICSTART Plus Device Programmer dialog.

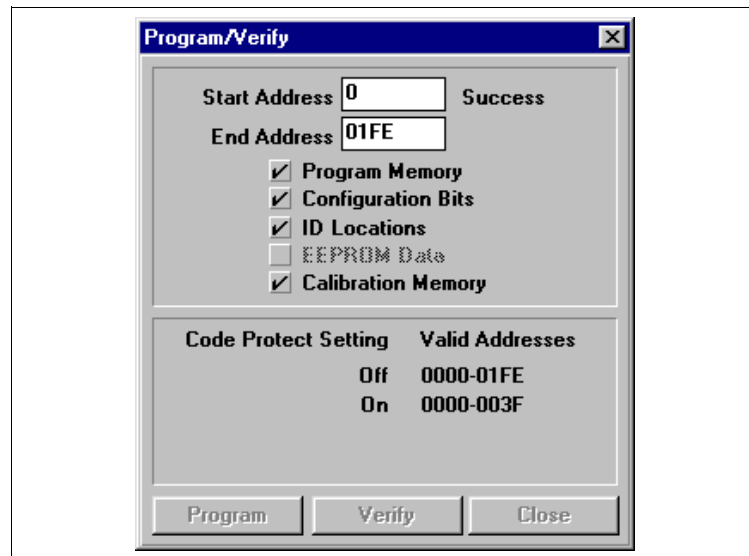


Figure 4.23: Verifying the Programming

Programming Examples

4.3.4 PIC12C508A Example Part 2: Reprogramming A Windowed Calibration Memory Device

4.3.4.1 Before You Begin

This tutorial is intended to be used after you have completed the tutorial on initially programming a windowed device in Section 4.3.3.

Before you can reprogram the windowed part, you must erase it in a UV eraser. Remove the covering on the device's window. Place the part in a UV eraser. The amount of time required to completely erase a UV erasable device depends on: the wavelength of the light, its intensity, distance from UV source, and the process technology of the device (the size of the memory cells). This erases the entire device, including its calibration memory. In order to work properly, the calibration memory for that individual device must be restored, by importing the calibration file you created for the chip earlier.

4.3.4.2 Setting Up the Device Programmer Dialog

When you first programmed the part in the previous tutorial (Section 4.3.3), you established a device ID to keep track of the version of firmware you programmed into it. You'll update that number for this step of the tutorial. Click **Device ID** in the PICSTART Plus Device Programmer dialog. Enter 0002. This is to indicate that you are about to program version 2 of your code. This will allow you to identify the version of firmware on the device after it is programmed and code-protected.

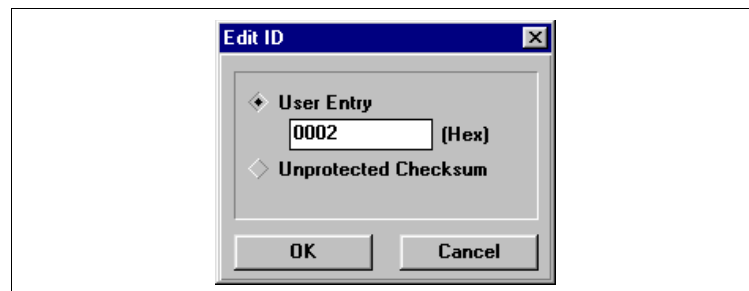


Figure 4.24: Using Device ID to Identify Firmware or Other Information

PICSTART[®] Plus User's Guide

4.3.4.3 Setting Up the Configuration Bits Dialog

The Configuration Bits dialog opens when PICSTART Plus is enabled. If you closed the Configuration Bits dialog, reopen it by clicking **Configuration Bits** in the PICSTART Plus Device Programmer dialog.

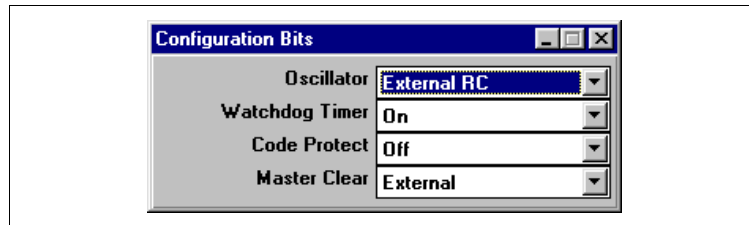


Figure 4.25: Configuration Bits Dialog – PIC16F84

Use the default values for the configuration bits. Make sure Code Protect is Off.

Programming Examples

4.3.4.4 Loading the Hex File to be Programmed

Before you load the device's calibration data into program memory, load the file to be programmed.

Select *File > Import > Import to Memory* to load the hex code into the MPLAB Program Memory window. Select 12c508a2.hex. This is similar to the program you originally used to program the part, but it has been modified slightly for this exercise.

The Program Memory window should now contain the hex code from the hex file. If the Program Memory window is not open, select *Window > Program Memory* to open it.

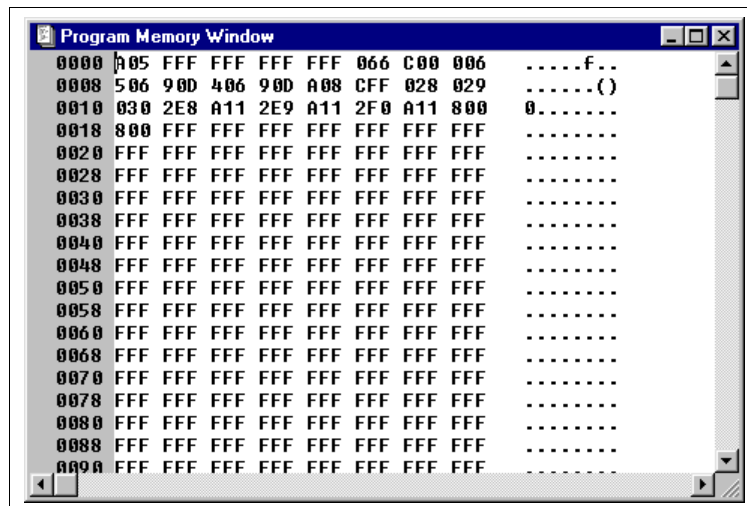


Figure 4.26: Program Memory – Hex Code Display

PICSTART[®] Plus User's Guide

4.3.4.5 Restoring Calibration Values to the Device

Earlier, you saved the part's calibration data to the hex file `calib-a.hex`. Because the UV eraser erased that data from the device, you must rewrite it to the device in order for the reprogrammed part to operate correctly.

1. Select *File > Import > Import to Memory* and select the saved calibration parameters file (`calib-a.hex`).

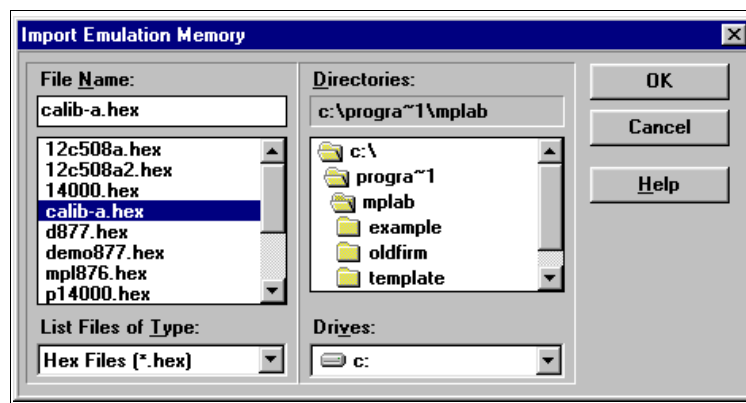


Figure 4.27: Restoring Calibration Data to an Erased Device

2. A default setting in the MPLAB IDE clears all memory on download. You don't want to do that when you're working with a device with calibration memory, because you want to preserve that memory in the device. Select *Options > Environment Setup*. Locate the Global Switches area in the **General** tab of the Development Mode dialog. Make sure there is **no** check mark in the Clear Memory on Download check box. Click **OK**.

4.3.4.6 Programming a Calibration Device

Click **Program** in the PICSTART Plus Device Programmer dialog. This will program the entire device including program memory, calibration memory, configuration bits, etc.

The Program/Verify dialog will appear while the device is being programmed. The areas being programmed are automatically selected based on the device.

When the programming is finished, "Success" or "Failure" will appear to the right of the Start Address.

Programming Examples

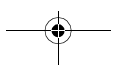
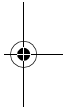
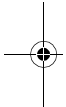
4.3.4.7 Verifying the Programming

Now that you have programmed a device, click **Verify** in the PICSTART Plus Device Programmer dialog to verify that the contents of the device match the values shown in the Program Memory window and PICSTART Plus Device Programmer dialog.



PICSTART[®] Plus User's Guide

NOTES:





MICROCHIP

PICSTART[®] PLUS USER'S GUIDE

Chapter 5. Using PICSTART Plus

5.1 Introduction

This chapter describes the steps required to program and read a device using the PICSTART Plus development programmer.

5.2 Highlights

Topics covered in this chapter:

- Procedure for Programming a Device
- Verifying the Programming
- Reading a Device

5.3 Procedure for Programming a Device

To program a device, you will need:

- A hex file to program into the PICmicro MCU device
- A blank PICmicro MCU device to program

Before you can program a device, you must:

- Install the PICSTART Plus hardware and MPLAB IDE software (Chapter 3)
- Establish communications between the PICSTART Plus and PC
- Set up the MPLAB IDE development mode
- Enable (start) PICSTART Plus (Section 3.9)

The following table lists the steps to program a device.

Step	Description	See Section
1	Set up the Device Programmer dialog	Section 5.3.1
2	Set up the Configuration Bits dialog	Section 5.3.2
3	Load a hex file into program memory or assemble/compile one in program memory from your source code	Section 5.3.3
4	Check that your device is blank	Section 5.3.5
5	Program the device	Section 5.3.6

PICSTART® Plus User's Guide

5.3.1 Setting Up the Device Programmer Dialog

The PICSTART Plus Device Programmer dialog (Figure 5.1) is always open when PICSTART Plus is enabled. Closing this dialog will disable the programmer.

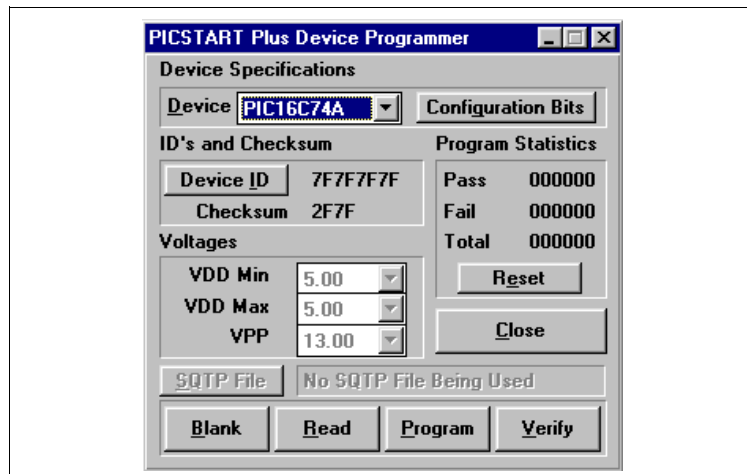


Figure 5.1: PICSTART Plus Device Programmer Dialog

The device list shows the device that was selected when you set up the MPLAB IDE development mode. If you wish to program a different device, you may select it here or through *Options > Development Mode*. However, changing the device at this point will close any open MPLAB IDE projects (unless you are in Editor Only mode) and clear the program memory, configuration bits, and ID locations.

If your device is not listed in the PICSTART Plus Device Programmer dialog, you will need to upgrade your version of MPLAB IDE software, and possibly your version of the PICSTART Plus operating system (Section 6.9).

Configuration bits are set in the Configuration Bits dialog, discussed in the next section. If you close the Configuration Bits dialog, you can reopen it by clicking **Configuration Bits** in this dialog.

You can edit the device ID value or program the unprotected checksum by clicking **Device ID**. You can reset Program Statistics by clicking **Reset**. The Voltages section is set to default voltages and cannot be changed.

Using PICSTART Plus

5.3.2 Setting Up the Configuration Bits Dialog

The Configuration Bits dialog (Figure 5.2) opens when PICSTART Plus is enabled. If you close the Configuration Bits dialog, you can reopen it by clicking **Configuration Bits** in the PICSTART Plus Device Programmer dialog.

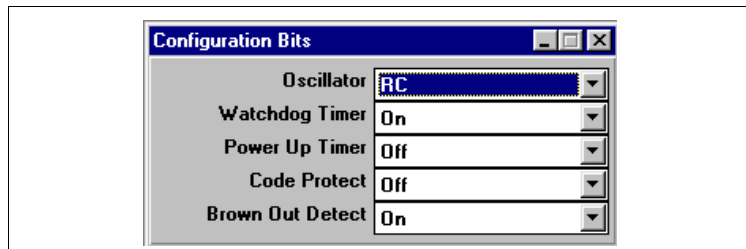


Figure 5.2: Configuration Bits Dialog – PIC16C74A

The configuration bits shown are for a PIC16C74A device. The type and number of configuration bits depend on the device you have selected. For more information on the functions of configuration bits for your device, refer to the device data sheet.

You can specify the configuration bit values in your source code instead of entering them into the Configuration Bits dialog. Use MPASM's `__CONFIG` directive to set the configuration bits for the device to be programmed. Each time you rebuild your project or reload your hex file, the configuration bits will be set according to the values from this directive.

If you do not set configuration bits in your source code, these bits will not be changed. If you manually change these bits from their default values using this dialog, they will be programmed into the PICmicro MCU device when you program the microcontroller.

An ID value set in the Edit ID dialog overrides any value set in the program.

Note: Setting configuration bits in the Configuration Bits dialog will not effect emulator or simulator operation. To do so, use [Options > Development Mode](#).

PICSTART[®] Plus User's Guide

5.3.3 Loading a Hex File into Program Memory

About Program Memory

When PICSTART Plus is enabled, the Program Memory window will be opened in Hex Code format, if it is not already open.

You can view the Program Memory as hex code, machine code, or disassembled with symbols (if available). To change display mode, click on the system button in the upper left corner of the window and select the display mode from the system menu.

When in MPLAB-ICE emulator mode, Program Memory shows the data that is in the emulation memory of the MPLAB-ICE pod. This memory is read by the MPLAB-ICE probe when you run, single step, or trace using the emulator.

When in MPLAB-SIM simulator mode or Editor Only mode, the Program Memory window reflects the contents of a memory buffer on the PC. This memory is read by MPLAB-SIM when you run, single step, or trace.

If you read program memory with PICSTART Plus while in emulator or simulator mode, it will overwrite the program memory being emulated or simulated. This can cause "mismatches" between the program memory and debug information if you have an MPLAB IDE project open. You will be given an option to close the current MPLAB IDE project or to continue and read the device's memory into the Program Memory window. Subsequent debug operations may not work properly.

Using PICSTART Plus

Loading a Hex File into Program Memory

If you have a hex file (e.g., code .hex) ready for programming into a PICmicro MCU, select *File > Import > Import to Memory* to load your hex code into MPLAB IDE's Program Memory. Select the Hex file type in the lower left of the Import Emulation Memory dialog, and then browse through the drives and directories to locate your hex file. Select your hex file and click **OK** (see Figure 5.3).

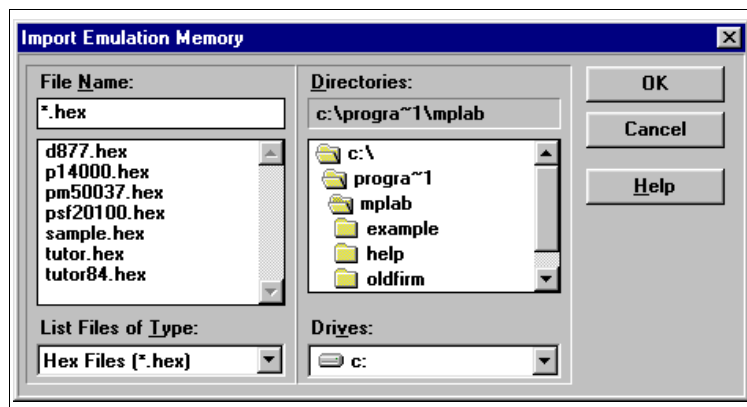


Figure 5.3: Import Emulation Memory Dialog

The Program Memory window should now contain the hex code from the hex file (Figure 5.4). If the Program Memory window is not open, select *Window > Program Memory* to open it.

PICSTART[®] Plus User's Guide

```

Program Memory Window
0000 2805 3FFF 3FFF 3FFF 3FFF 1683 3007 009F .....
0008 1283 0186 01A8 01A5 1683 0186 1283 3008 .....
0010 00A3 20A9 2079 2079 201C 0824 1903 2812 ..y.$..
0018 00A4 1283 207D 2812 01A4 08A5 1D03 2835 ..)....5
0020 1003 0DA3 1C03 2826 3010 00A3 0186 1683 ...&...
0028 300F 0086 1283 0823 0086 300F 0506 1903 ...#...
0030 2845 0186 0423 00A4 00A5 01A0 2079 0186 E.#...y.
0038 1683 300F 0086 1283 0823 0086 0825 0606 ...#.%
0040 1903 2845 0186 01A4 01A5 0186 1683 0186 .E.....
0048 1283 0828 0086 300F 0524 00A0 1903 2867 .(.$.g
0050 30FF 3E01 0CA0 1C03 2851 00A0 0E24 390F ....Q.$
0058 00A6 30FF 3E01 0CA6 1C03 285A 00A6 1003 ....Z..
0060 0DA6 0DA6 0826 0720 2068 00A4 00A8 0008 ..&h...
0068 0782 3446 3442 3430 3441 3445 3439 3438 .FB0AE98
0070 3437 3444 3436 3435 3434 3443 3433 3432 7D654C32
0078 3431 0000 0BA0 2879 0008 00A1 2093 0821 1..y...!
0080 0088 1105 1485 0000 1585 0000 1185 0008 .....
0088 00A1 2093 0821 0088 1105 1085 0000 1585 ..!.....
0090 0000 1185 0008 0188 1683 30FF 0088 1283 .....
0098 1085 1505 0000 1585 0000 0000 0808 1185 .....
00A0 00A0 1BA0 2893 1105 1683 3000 0088 1283 .....
00A8 0008 1283 0185 0188 1683 3000 0088 3000 .....
00B0 0085 1283 0185 3038 0088 0000 1585 0000 ...8....
00B8 1185 3000 00A0 2079 2079 2079 2079 2079 ...yyyyy
    
```

Figure 5.4: Program Memory – Hex Code Display

If you do not have a hex file with which to program your device, you can build one using MPLAB Projects. The *MPLAB IDE User's Guide* contains several tutorials that instruct you on using MPLAB Projects to develop your own firmware. Each time you rebuild your project, the Program Memory window will be updated.

5.3.4 File Formats Used by PICSTART Plus

PICSTART Plus can use information directly from the MPLAB IDE projects without any intermediate steps. MPASM can be used separately from the MPLAB IDE to produce hex files for PICSTART Plus. Alternatively, devices can be programmed with hex files from any PICmicro MCU compatible cross-assembler or cross-compiler.

If you are using MPASM separate from the MPLAB IDE, or are using the MPLAB IDE to generate hex files for use with PICSTART Plus, you should use either INHX8M or INHX32 hex formats. MPASM's default output format for hex files is INHX8M. If you are programming PIC17CXXX or PIC18CXXX devices, you should use INHX32 format. See the *MPASM User's Guide with MPLINK and MPLIB* for details on file formats.

Using PICSTART Plus

5.3.5 Checking For a Blank Device

Insert the device to be programmed into the PICSTART Plus socket. Position pin one on the device to be in the pin one position as shown by the '1' immediately to the left of the socket. Secure the device by pulling the silver lever on the socket toward you (up).

Click **Blank** in the PICSTART Plus Device Programmer dialog to verify that the device is completely blank (all bits are set to a '1'). This will also verify that all configuration bits are set to a '1' (unprogrammed state). You can also perform a blank check by selecting *PICSTART Plus > Blank Check All* from the MPLAB menu.

If you are using a one-time programmable (OTP) device, some configuration bits might already be programmed from the factory (e.g., oscillator bits). Use the Configuration Bits dialog to set the configuration bits to the factory settings and then select *PICSTART Plus > Blank Check OTP*. This will check that all program memory bits are set to '1' and that the configuration bits match the value in the dialog. An OTP device cannot be erased and reprogrammed.

If the EPROM device is not blank, you will have to erase it before programming. To erase a windowed device:

1. Remove any labels covering the device window. If you do not have a windowed device (Figure 5.5), you cannot reprogram it. A windowed version of all EPROM devices may be ordered by requesting the JW package.

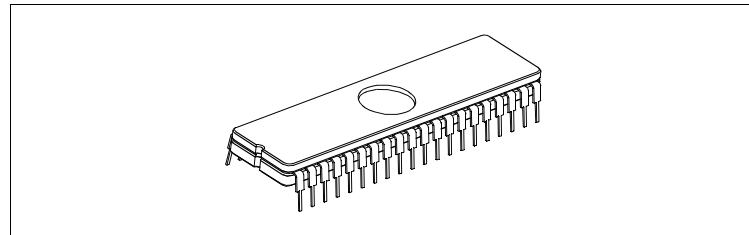


Figure 5.5: Windowed Device

2. Place the device in an Ultraviolet (UV) EPROM Eraser. The amount of time required to completely erase a UV erasable device depends on: the wavelength of the light, its intensity, distance from UV source, and the process technology of the device (the size of the memory cells).
3. Before attempting to program the device, perform the blank check again to verify that it is blank.

If the device is EEPROM/FLASH, you do not have to erase it before reprogramming it. These devices are electrically erased before programming.

PICSTART[®] Plus User's Guide

5.3.6 Programming a Device

To program the entire device (i.e., all of program memory, configuration bits, etc.), click **Program** in the PICSTART Plus Device Programmer dialog.

To program selectively (e.g., part of program memory, only configuration bits), select *PICSTART Plus > Program/Verify* to open the Program/Verify dialog (Figure 5.6). Select the options for programming, then click **Program** in the Program/Verify dialog to program the device.

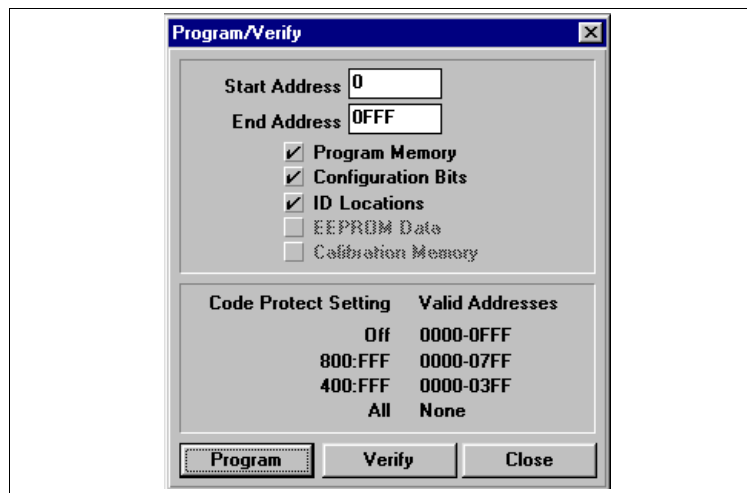


Figure 5.6: Program/Verify Dialog

To compare the contents of the device to the values shown in the MPLAB IDE, click **Verify**. **Close** will exit the dialog.

To selectively program, you will need to adjust the following settings in the Program/Verify dialog. The memory area corresponding to the checked boxes will be programmed. Areas that are grayed out are not available on the device.

Start Address	The starting address in program memory for programming or verification.
End Address	The ending address in program memory for programming or verification.
Program Memory	Program or verify the program memory for the range specified by Start Address and End Address.
Configuration Bits	Program or verify the configuration bits.
ID Locations	Program or verify the ID locations. You can set the ID locations using the PICSTART Plus Device Programmer dialog.

Using PICSTART Plus

EEPROM Data	For devices with data EEPROM, program or verify the data memory from data in the EEPROM Memory window. Refer to the <i>MPLAB IDE User's Guide</i> for more information on data EEPROM and the EEPROM Memory window.
Calibration Memory	For devices with calibration memory, program or verify the calibration memory from data in the Calibration Memory window. Refer to the <i>MPLAB IDE User's Guide</i> for more information on calibration memory and the Calibration Memory window.
Code Protect Settings	Shows the status and availability of code protection for the selected device.

5.4 Verifying the Programming

Click **Verify** in the PICSTART Plus Device Programmer dialog or the Program/Verify dialog to verify that the contents of the device match the program memory, EEPROM data, calibration memory, ID locations, and configuration bits in the MPLAB IDE and in the PICSTART Plus Device Programmer dialog and Configuration Bits dialog.

PICSTART[®] Plus User's Guide

5.5 Reading a Device

To copy the firmware from a programmed PICmicro MCU device into an unprogrammed device, you first read the programmed firmware (program memory, configuration bits, etc.) into the MPLAB IDE, and then program the new device based on this information.

To read the entire device (e.g., all of program memory, configuration bits, etc.), click **Read** in the PICSTART Plus Device Programmer dialog.

To read selectively (e.g., part of program memory, only configuration bits, etc.), select *PICSTART Plus > Read Device* to display the Read Device dialog (Figure 5.7). Select the options to be read, and then click **Read** in the Read Device dialog to read the device. The memory area corresponding to the checked boxes will be read. Areas that are grayed out are not available on the device. **Close** will exit the dialog.

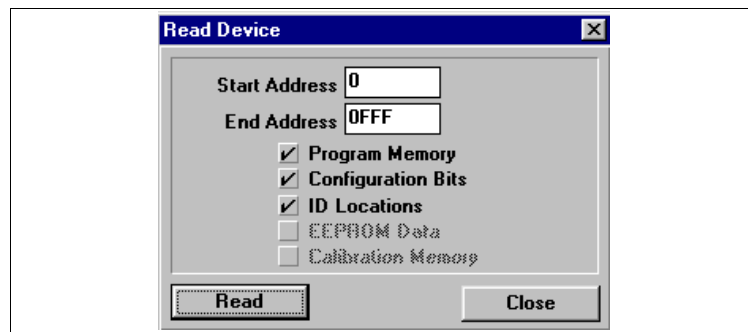


Figure 5.7: Read Device Dialog

To selectively read, adjust the following settings in the Read Device dialog.

Start Address	The starting address in program memory for reading.
End Address	The ending address in program memory for reading.
Program Memory	Read the program memory for the range specified by Start Address and End Address.
Configuration Bits	Read the configuration bits.
ID Locations	Read the ID locations.

Using PICSTART Plus

EEPROM Data

For devices with data EEPROM, read the data in the data memory into the EEPROM Memory window. For more information on data EEPROM and the EEPROM Memory window, refer to the *MPLAB IDE User's Guide*.

Calibration Memory

For devices with calibration memory, read the data in the calibration memory into the Calibration Memory window. For more information on calibration memory and the Calibration Memory window, refer to the *MPLAB IDE User's Guide*.

Once the Read is complete, the Program Memory window will display the data read from the device master. You can then:

- Modify the data in the MPLAB IDE by selecting *Window > Modify* before you save to a hex file or program another device
- Save the data as a hex file by selecting *File > Export > Export Memory*
- Insert a new device into PICSTART Plus to copy the data into it

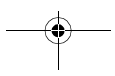
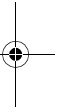
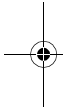
Note: If you have an MPLAB-ICE emulator connected to the MPLAB IDE, your code will be downloaded to the emulated program memory of the MPLAB-ICE. If you have a project open, you will be asked if you want to close it before reading memory from a device. If you keep your project open, the Absolute Listing window and the Source Code window may not match the data you have read into the Program Memory window. Symbols may not match the proper addresses in the Program Memory window.

If you have any problems when attempting to read a device, refer to Appendix C.



PICSTART[®] Plus User's Guide

NOTES:





MICROCHIP

PICSTART[®] PLUS USER'S GUIDE

Chapter 6. PICSTART Plus – Reference

6.1 Introduction

This chapter describes the dialogs, windows, and menu items of the PICSTART Plus development system.

6.2 Highlights

Topics covered in this chapter:

- PICSTART Plus Device Programmer Dialog
- Configuration Bits Dialog
- Program Memory Window
- Program/Verify Dialog
- Read Device Dialog
- PICSTART Plus Menu Items
- Upgrading the PICSTART Plus Operating System

PICSTART[®] Plus User's Guide

6.3 PICSTART Plus Device Programmer Dialog

The PICSTART Plus Device Programmer dialog (Figure 6.1) is displayed whenever the programmer is enabled. Closing the PICSTART Plus Device Programmer dialog will disable the programmer. The options in the dialog will show the current values if active, or will be disabled (grayed out). The Voltage section is set to default voltages and cannot be changed.

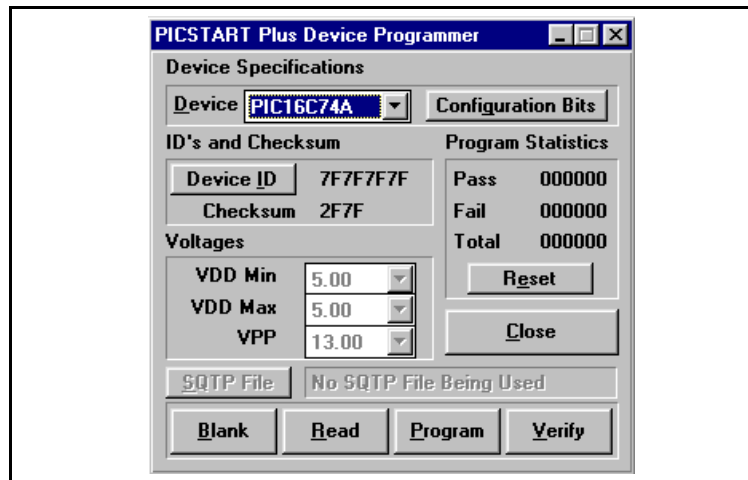


Figure 6.1: PICSTART Plus Device Programmer Dialog

To program a device, you will need to set the following options in the PICSTART Plus Device Programmer dialog.

Device

Sets the PICmicro MCU device type to use with PICSTART Plus. The default is the device that was selected when you set up the development mode.

Note: Setting the device type here will close any open MPLAB IDE projects (except in Editor Only mode) and clear the program memory, configuration bits, and ID locations.

PICSTART Plus – Reference

ID's and Checksum Click **Device ID** to open the Edit ID dialog to edit the ID value or program the unprotected checksum to the device.

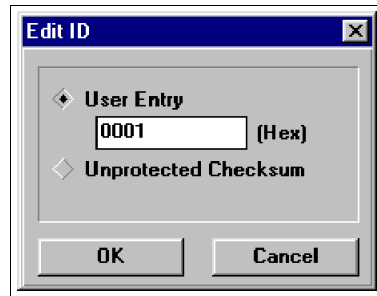


Figure 6.2: Edit ID Dialog

If a particular ID value is to be programmed, select **User Entry** and enter the 4- or 8-digit hex value for the ID. To have the unprotected checksum automatically programmed into the ID value for the device, select **Unprotected CheckSum**. Click **OK** to set the option, or click **Cancel** to return to the PICSTART Plus Device Programmer dialog, without setting the ID option.

You can also use the `__IDLOCS` directive to set the ID bytes. Each time you rebuild your project or reload your hex file, the ID locations will be set according to the values from this directive.

An ID value set in the Edit ID dialog overrides any value set in the program.

Program Statistics	Shows the number of successful (Pass) and unsuccessful (Fail) programming instances, as well as the Total. Click Reset to reset the counters.
Voltages	Lists default voltages. The Voltages section is set to default voltages and cannot be changed.
Close	Closes the PICSTART Plus Device Programmer dialog and disables the programmer.
SQTP File	Serialized Quick Turn Production (SQTP SM) programming is not available for PICSTART Plus.
Blank	Verifies that the device is completely blank (all bits are set to a '1'). This will also verify that all configuration bits are set to a '1' (unprogrammed state).

PICSTART[®] Plus User's Guide

Read	Reads all program memory, configuration bits, ID locations, EEPROM data, and calibration memory on the device.
Program	Programs all program memory, configuration bits, ID locations, EEPROM data, and calibration memory on the device.
Verify	Verifies that the programming on the device matches the program memory, configuration bits, ID locations, EEPROM, and calibration memory values in the MPLAB IDE and in the PICSTART Plus Device Programmer dialog.

6.4 Configuration Bits Dialog

The Configuration Bits dialog (Figure 6.3) is displayed whenever the programmer is enabled. If you close the Configuration Bits dialog, you can reopen it by clicking **Configuration Bits** in the PICSTART Plus Device Programmer dialog. The bits listed in the Configuration Bits dialog depend on the device you have selected.

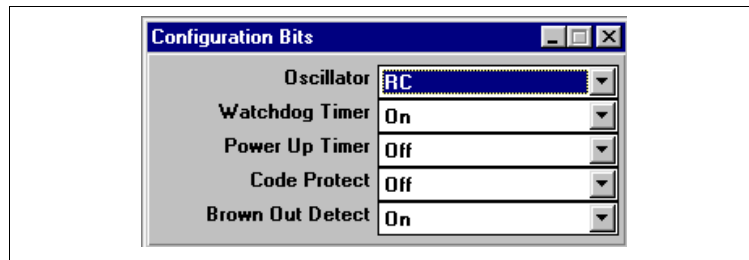


Figure 6.3: Configuration Bits Dialog

PICSTART Plus – Reference

6.5 Program Memory Window

When PICSTART Plus is enabled, the Program Memory window will be opened in Hex Code format, if it is not already open.

When in the MPLAB-ICE emulator mode, Program Memory shows the data that is in the emulation memory of the MPLAB-ICE pod. This memory is read by the MPLAB-ICE probe when you run, single step, or trace using the emulator.

When in the simulator mode or editor only mode, the Program Memory window reflects the contents of a memory buffer on the PC. This memory is read by MPLAB-SIM when you run, single step, or trace.

If you read program memory with PICSTART Plus while in emulator or simulator mode, it will overwrite the program memory being emulated or simulated. This can cause “mismatches” between the program memory and debug information if you have an MPLAB IDE project open. You will be given an option to either close the current MPLAB IDE project or to continue and read the device’s memory into the Program Memory window. Subsequent debug operations might not work properly.

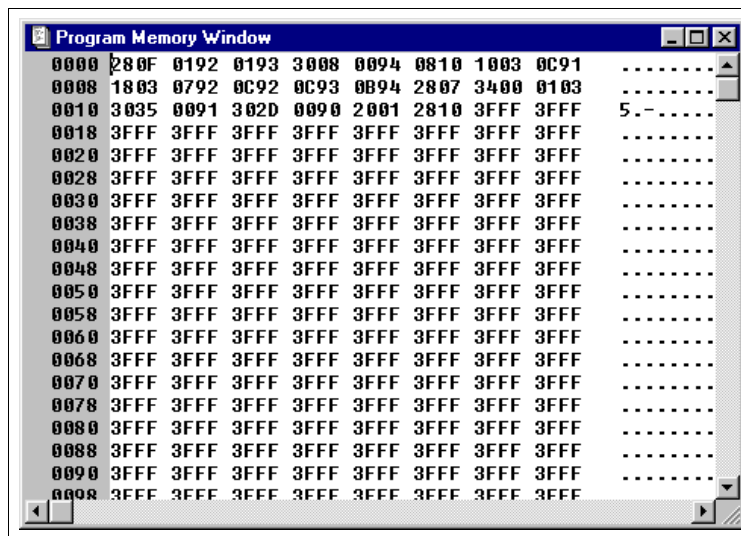


Figure 6.4: Program Memory Window

You can view the Program Memory as hex code, machine code, or disassembled with symbols (if available). Change display mode by clicking on the system button and selecting the display option from the system menu.

PICSTART[®] Plus User's Guide

6.6 Program/Verify Dialog

To program or verify selectively (e.g., part of program memory, only configuration bits, etc.), select *PICSTART Plus > Program/Verify* to open the Program/Verify dialog (Figure 6.5).

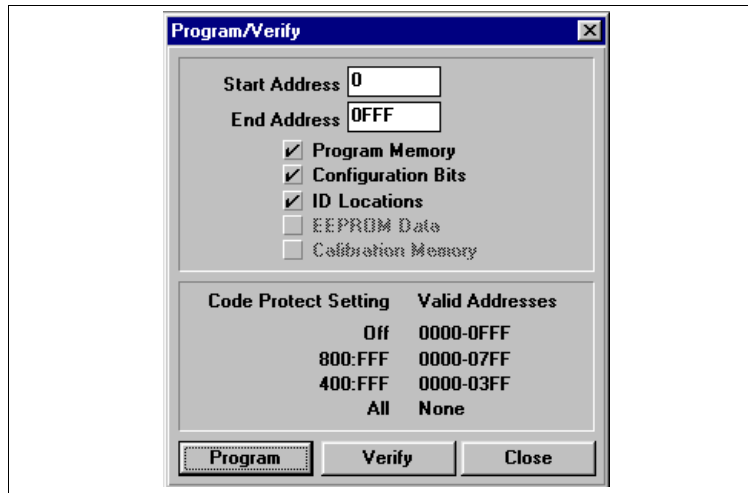


Figure 6.5: Program/Verify Dialog

Select the options for programming or verifying. Then click **Program** in this dialog to program the device. The memory area corresponding to the checked boxes will be programmed. Areas that are grayed out are not available on the device.

Click **Verify** to verify that the programming on the device matches the program memory, configuration bits, ID locations, EEPROM, and calibration memory values in the MPLAB IDE and in the PICSTART Plus Device Programmer dialog and Configuration Bits dialog.

- Start Address** The starting address in program memory for programming or verification.
- End Address** The ending address in program memory for programming or verification.
- Program Memory** Program or verify the program memory for the range specified by Start Address and End Address.
- Configuration Bits** Program or verify the configuration bits.
- ID Locations** Program or verify the ID locations. You can set the ID locations using the PICSTART Plus Device Programmer dialog.

PICSTART Plus – Reference

EEPROM Data	For devices with data EEPROM, program or verify the data memory from data in the EEPROM Memory window. Refer to the <i>MPLAB IDE User's Guide</i> for more information on data EEPROM and the EEPROM Memory window.
Calibration Memory	For devices with calibration memory, program or verify the calibration memory from data in the Calibration Memory window. Refer to the <i>MPLAB IDE User's Guide</i> for more information on calibration memory and the Calibration Memory window.
Code Protect Settings	Shows the status and availability of code protection for the selected device.

6.7 Read Device Dialog

To read selectively (e.g., part of program memory, only configuration bits, etc.), select *PICSTART Plus > Read Device* to display the Read Device dialog (Figure 6.6). Select the options to be read, and then click **Read** in this dialog to read the device. The memory area corresponding to the checked boxes will be read. Areas that are grayed out are not available on the device. **Close** will exit the dialog.

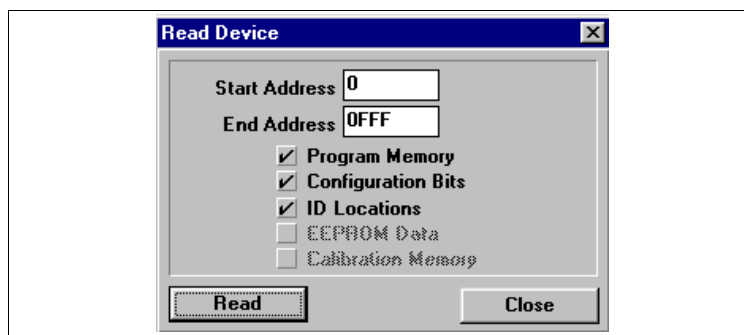


Figure 6.6: Read Device Dialog

To selectively read, you will need to adjust the following settings in the Read Device dialog.

Start Address	The starting address in program memory for reading.
End Address	The ending address in program memory for reading.
Program Memory	Read the program memory for the range specified by Start Address and End Address.
Configuration Bits	Read the configuration bits.
ID Locations	Read the ID locations.

PICSTART[®] Plus User's Guide

EEPROM Data For devices with data EEPROM, read the data in the data memory into the EEPROM Memory window. For more information on data EEPROM and the EEPROM Memory window, refer to the *MPLAB IDE User's Guide*.

Calibration Memory For devices with calibration memory, read the data in the calibration memory into the Calibration Memory window. For more information on calibration memory and the Calibration Memory window, refer to the *MPLAB IDE User's Guide*.

Note: If you have an MPLAB-ICE connected to the MPLAB IDE, your code will be downloaded to the emulated program memory of the MPLAB-ICE. If you have a project open, you will be asked if you want to close it before reading memory from a device. If you keep your project open, the Absolute Listing window and the Source Code window may not match the data you have read into the Program Memory window. Symbols may not match the proper addresses in the Program Memory window.

6.8 PICSTART Plus Menu Items

The PICSTART Plus menu items perform the following functions:

- **Enable/Disable Programmer** – Enables or disables the programmer. Once the programmer is enabled, this menu item changes to Disable Programmer.
- **Program/Verify** – Opens the Program/Verify dialog which allows you to program the device selectively (e.g., program part of program memory, or only configuration bits), or to verify that the device was programmed properly.
- **Read Device** – Opens the Read Device dialog which allows you to read the device selectively (e.g., part of program memory, only configuration bits of the device).
- **Blank Check All** – Checks that the device is completely blank (all bits are set to a '1'). This will also check that all configuration bits are set to a '1' (unprogrammed state).
- **Blank Check OTP** – This function is intended for use with OTP devices that come with factory programmed configuration bits. Before using this function, set the displayed configuration bits to match the factory programmed settings. The function verifies that all program memory bits are set to '1' and that the configuration bits match the settings displayed in the Configuration Bits dialog.
- **Display Error Log** – When you have programmed a device or verified a device, an error window will show you data from memory in the device, that do not match the corresponding memory in the MPLAB IDE.

PICSTART Plus – Reference

- **Erase Program Memory** – Sets all bits in MPLAB IDE Program Memory, Calibration Memory, and Data Memory (if applicable) to '1'.
- **Erase Configuration Bits** – Sets all available configuration bits and ID location bits to '1'. If you reload your hex file or your project after using this menu item to erase configuration bits, the values in the Configuration Bits dialog will be updated to reflect the newly loaded configuration bit data in your hex file or code. You can select this menu item after you have loaded your hex file or rebuilt your project, if you want to override the configuration bit values in your hex file or code.
- **Reset Programmer** – Resets the PICSTART Plus hardware and reestablishes RS-232 communications. Use this option if power has been disconnected from the PICSTART Plus. This option does not reset programming information in the Program Memory window, configuration bits, or IDs.

6.9 Upgrading the PICSTART Plus Operating System

The PICSTART Plus operating system may need to be upgraded periodically to support new devices. You can obtain these upgrades on our web site at <http://www.microchip.com>. To install the upgrade, perform the steps in this section.

Required Equipment

- PICSTART Plus programmer with the MPLAB IDE software
- Blank/erased PIC17C44 microcontroller (25 MHz or faster)
- Upgrade hex file (e.g., `psf20100.hex`) from the Microchip web site (<http://www.microchip.com>)

Note: This file is included with the latest version of MPLAB IDE. Most likely, you will need new MPLAB IDE software and new PICSTART Plus software drivers to take advantage of the features in the new operating system.

- Phillips head screwdriver

Before You Begin

PICSTART Plus hardware and the MPLAB IDE software should be installed and the programmer should be communicating with the PC via a serial port. See Section 3.4 for installation procedures and Section 3.7 for serial port configuration information.

PICSTART[®] Plus User's Guide

Procedure

1. Select *Options > Development Mode*. Set up MPLAB IDE's development mode as follows: Editor Only, PIC17C44 device.
2. Select *PICSTART Plus > Enable* to enable the PICSTART Plus programmer.
3. Ensure that the PIC17C44 is the selected device in the Device Programmer dialog. If not, select it from the Device list in the PICSTART Plus Device Programmer dialog.
4. If the Configuration Bits dialog is not displayed, click **Configuration Bits** in the PICSTART Plus Device Programmer dialog. Set the configuration bits in the Configuration Bit dialog as described below:
 - Oscillator: XT
 - Processor Mode: Microcontroller
 - Watchdog Timer: TMR
5. Select *File > Import > Import to Memory* to import the upgrade hex file into the MPLAB IDE's program memory. Select the upgrade hex file and click **OK**.
6. Insert the PIC17C44 microcontroller into PICSTART Plus socket and click **Blank** in the PICSTART Plus Device Programmer dialog, to check that it is blank (see Section 5.3.5). If the device is not blank, it must be erased before programming.
7. Click **Program** in the PICSTART Plus Device Programmer dialog to program the hex file into the device.
8. Remove the PIC17C44 from the programming socket and label it with the upgrade version (e.g., VER 2.01.00).
9. Exit the MPLAB IDE and disconnect the PICSTART Plus from the computer serial port and power supply.
10. Carefully remove the four Phillips head screws from the back of the PICSTART Plus. Remove the back cover.
11. Remove the PICSTART Plus PCB from the housing.
12. Carefully remove the PIC17C44 from the PICSTART Plus PCB. Save this version as it may be needed for future upgrades.
13. Carefully insert the PIC17C44 you just programmed into the socket, making sure that Pin 1 is properly oriented (Pin 1 should be close to the serial port connector).
14. Place the PICSTART Plus PCB back into the housing.
15. Carefully insert the Phillips head screws into the holes in the back cover, then tighten each screw slowly. The plastic housing can be damaged if too much torque is applied to the screws.
16. Reconnect the PICSTART Plus programmer to the computer serial port and power supply.
17. Start the MPLAB IDE software and enable the PICSTART Plus programmer.
18. As the programmer is being enabled, the dialog box will indicate the PICSTART Plus operating system version. You can also check the version by selecting *Help > About MPLAB* and locating PICSTART Plus in the list of Registered Applications.

Your PICSTART Plus operating system is now upgraded.



MICROCHIP

PICSTART[®] PLUS USER'S GUIDE

Appendix A. Connecting to a 25-Pin Serial Port

A.1 Introduction

This appendix describes how to connect the PICSTART Plus programmer to a 25-pin serial port.

A.2 Highlights

Topics covered in this appendix:

- Connection Description

A.3 Connection Description

The following table provides the data for connecting the PICSTART Plus programmer (9-pin straight-through) to a 25-pin serial port. Connect the corresponding terminals indicated on each line of the table.

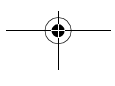
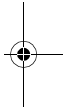
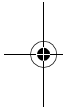
Table A.1: PC Host to PICSTART Plus Signals

25-pin (PC-Host)			9-pin (PICSTART Plus)	
2	TX	↔	2	RX
3	RX	↔	3	TX
20	DTR	↔	4	DTR
7	Common	↔	5	Common
6	DSR	↔	6	+5 volts (pulled up)
4	RTS	↔	7	CTS
5	CTS	↔	8	RTS



PICSTART[®] Plus User's Guide

NOTES:





MICROCHIP

PICSTART[®] PLUS USER'S GUIDE

Appendix B. PICSTART Plus VPP Adjustment

B.1 Introduction

This appendix describes how to change the VPP programming voltage of older PICSTART Plus hardware units to comply with revised programming specifications.

B.2 Highlights

Topics covered in this appendix:

- Overview
- Procedure
- Validation

B.3 Overview

In order to remain current with Microchip's programming specifications, any PICSTART Plus, Revision 7 or lower, might need a slight adjustment of the VPP voltage. This adjustment will bring the VPP voltage from a nominal 13.75 volts to a nominal 13.00 volts. This is due to the update of the programming specifications, after the introduction of the PICSTART Plus.

B.4 Procedure

To identify the revision of PICSTART Plus, look at the label on the back. The serial number will end in a -Rx, where x is the current revision of the PICSTART Plus (e.g., -R7 or -R13). If this number is -R7 or lower, use one of the following two methods to adjust the VPP voltage to the nominal 13.00V:

Method 1:

Locate resistor R4, and solder a 562 kOhm 1% resistor across R4. This will lower the value of R4 and lower the VPP voltage to a nominal 13.00V.

Method 2:

Locate resistor R4, and remove R4 and replace with a 22.6 kOhm 1% resistor. This will lower the VPP voltage to a nominal 13.00V.

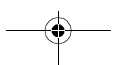
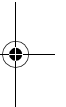
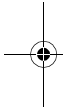
B.5 Validation

After completing the procedure, apply 9V to the PICSTART Plus and measure the voltage across Capacitor C5. It should be a nominal 13.00 (12.75 – 13.25) volts. If the voltage is correct, the modification is complete. If not, make sure that the procedure was properly followed and there are no solder shorts near the rework area.



PICSTART[®] Plus User's Guide

NOTES:





MICROCHIP

PICSTART[®] PLUS USER'S GUIDE

Appendix C. Troubleshooting

C.1 Introduction

This appendix describes some common problems associated with using PICSTART Plus and steps to follow to resolve those problems.

C.2 Highlights

Topics covered in this appendix:

- Common Problems

C.3 Common Problems

MPLAB IDE displays this message: "Failed to Establish Communication."

MPLAB IDE attempts to establish communication with the PICSTART Plus device programmer upon enabling the programmer. If communication cannot be established, no programming can occur. A dialog box appears if the attempt to establish communication fails. If a communication attempt fails, try again after correcting the problem, or cancel.

SOLUTIONS:

- Make sure that the RS-232 cable is connected, the power supply is connected, and the Power LED on the PICSTART Plus is on.
- Try connecting the PICSTART Plus to a different serial port. If your PC has a 25-pin serial port, you will need a 25-to-9 serial port adapter.
- Make sure that a COM port is properly set up exclusively for use by PICSTART Plus. Check the resources to ensure they are operating properly and that there are no conflicts with other devices. This commonly happens when you have a modem or other serial device that is improperly configured. Consult your Windows manual, or other reference literature. You can try removing, reconfiguring, or disabling the conflicting device, but do so only if you are familiar with those procedures. See the steps below for Windows 3.1 or Windows 95/98.
- Some system errors are caused by driver and hardware incompatibility. See the steps below for Windows 95/98.

PICSTART[®] Plus User's Guide

- If you have a COM port but the MPLAB IDE will not let you select it (the option is grayed out), you may be able to assign the port manually by editing the `mplab.ini` file. Typically, this occurs if you have a gap in your COM port list (e.g., you have a COM1, COM2, and a COM4, but no COM3). In this case, you may be able to fix it by opening `mplab.ini` (use FIND to locate this file) and editing the section called [programmers], so that the setting `CommPort=1` is set to the port you want selected. This is just a work-around to a deeper problem, in which the Windows operating system is incorrectly reporting port availability through the 16-bit driver.
- You must use the Microsoft Windows communications driver that is native to the version of Windows that you use. If you use Windows 3.10, look for the file `COMM.DRV` in your `\WINDOWS\SYSTEM` directory. That file MUST have a time of 3:10a. The time denotes the version. If you are using Windows for Workgroups, look for the same file as above, but the time stamp on that file should be 3:11a. If these files differ, you may need to reinstall the Windows operating system, or install that file from another source. This problem is not likely to occur in Windows 95/98.
- Make sure you are not using a third party communications driver. Open your `system.ini` file and look for the line in the [OPTIONS] section that reads

`COMM.DRV=COMM.DRV`

If this line reads differently, you are using a different communications driver.

Windows 3.1:

A serial mouse will use a COM port, as will an external modem. An internal modem has its own COM port, so if you have a second COM port on your PC, set it so it won't conflict with either the mouse or the modem.

Windows 95/98, Windows NT, Windows 2000:

Windows 95/98, Windows NT, and Windows 2000 require special attention to setting up COM ports. If you suspect a driver - hardware incompatibility, try changing Flow Control to Hardware and/or turning off the FIFO for the serial port. This is done in the Control Panel.

In Windows 95/98, click the System Icon. Click the **Device Manager** tab, and click **Ports**. If necessary, expand the Ports selection by clicking the "+" sign next to it. Double-click the I/O port that PICSTART Plus is connected to. This is where you can set flow control to Hardware. To turn off FIFO, click the **Advanced** button, deselect the Use FIFO box, and click **OK**.

In Windows NT, click the Ports Icon. Select the COM port, click **Settings**, and then click the **Advanced** button. Deselect the FIFO box, and click **OK**.

In Windows 2000, click the System Icon. Click the **Hardware** tab, and click the **Device Manager** button. If necessary, expand the Ports selection by clicking the "+" sign next to it. Double-click the I/O port that PICSTART Plus is connected to. This is where you can set flow control to Hardware. To turn off FIFO, click the **Port Settings** tab, and click the **Advanced** button. Deselect the Use FIFO box, and click **OK**.

Troubleshooting

No PICSTART Plus Menu Visible

If you have been using another programmer (e.g., PRO MATE II), the PICSTART Plus menu might not be available.

SOLUTION:

Select *Options > Programmer Options > Select Programmer* to open the Select Programmer dialog, and choose PICSTART Plus from the list. After you select the programmer, MPLAB IDE will issue you a warning prompt and shut itself down. You must restart MPLAB IDE before the programmer options are available. The PICSTART Plus menu will appear on the menu bar when you restart MPLAB IDE.

Operating System Update Needed

If the device you selected when setting up the development mode in MPLAB IDE is not supported by the PICSTART Plus operating system, a message box will appear when you try to enable the programmer.

SOLUTION:

Upgrade your version of the PICSTART Plus operating system as described in Section 6.9. Make sure to get the latest versions for MPLAB IDE software and PICSTART Plus operating system (Section 6.9).

When trying to enable the PICSTART Plus with the MPLAB IDE this message appears: "Incompatible Software and Operating System Versions."

The versions of software and operating system are mixed. PICSTART Plus and the MPLAB IDE include compatibility checks to ensure that version requirements are met.

SOLUTION:

Make sure to get the latest versions for the MPLAB IDE software and PICSTART Plus operating system (Section 6.9).

MPLAB IDE displays this message: "Hex file not found."

The project did not generate a hex file.

SOLUTION:

Check the Make Project panel on MPLAB IDE to ensure that a hex file is being generated when you assemble or compile. Errors in your code will prevent hex file generation.

MPLAB IDE displays this message: "Program memory contains code protected data. Proceed with programming?"

Program memory contains data that was read from a code protected device. Most or all of this data is not usable.

SOLUTION:

Obtain the original hex code from a file or a nonprotected device.

PICSTART[®] Plus User's Guide

When reading a device MPLAB IDE gives the following warning message: "Device is code protected. Program memory may be invalid."

If you attempt to read a code protected device, you will get this warning.

SOLUTION:

Obtain the original hex code from a file or a nonprotected device.

Available menu functions are not operating.

Like many other applications, MPLAB IDE and PICSTART Plus use Borland's `bwcc.dll`. Therefore, other versions of this DLL may interfere with tool operation.

SOLUTION:

Verify what other copies of this DLL exist on your machine and make sure they are all the latest available version (BWCC.DLL is backward compatible). Then, reboot your machine and execute the MPLAB IDE.

Blank Check failed on a known blank mid-range device.

PICSTART Plus operating system versions prior to v1.01.16 would erroneously program the first ID location upon the first access to the device after power-up. Version 1.01.00 did this sporadically, v1.01.06 did this consistently.

SOLUTION:

Upgrade to the latest operating system version following the procedure outlined in Section 6.9.

PIC16C73, PIC16C74: known blank part shows to be nonblank.

When programming some PIC16C7X (PIC16C73, PIC16C74) devices, a known blank part will show to be not blank and will not program properly. The problem occurs because the rise time of V_{PP} is too fast to properly set the part into programming mode. This occurs only on certain date codes of parts and only on non-PIC16C7XA parts.

SOLUTION:

Insert a 0.01 μF capacitor between V_{PP} (Pin 1) and ground (Pin 8) of the socket before inserting part. This will slow the V_{PP} rise time and allow the device to enter programming mode.

When reading a blank PIC16C55A or PIC16C57C, program memory values of 0xBFF are reported.

The oscillator circuit for these devices is different from that of previous devices, and can cause contention during the read operation.

SOLUTION:

Use a stand-off socket with OSC2 (pin 26) clipped.

Troubleshooting

Program and reading problems with PIC16F87X Devices.

PIC16F87X devices are shipped with low-voltage programming enabled.

PICSTART Plus uses the high-voltage programming method. Some devices do not exit programming mode properly if low-voltage programming is enabled, resulting in invalid read and programming operations.

SOLUTION:

Place a 10 kOhm resistor between the RB3 pin and one of the ground pins on the programming socket. Refer to the device data sheet for the pinout of the specific device.

A power interruption occurred.

PICSTART Plus v1.20 and greater can account for power interruptions between functions. Earlier versions do not.

SOLUTION:

If a power interruption occurs using an earlier version of the PICSTART Plus DLL, apply power to the programmer and reselect the desired device from the Programmer Status window.

LEDs flicker or power LED does not come on.

Wrong part selected and thermal fuse is blown, or device inserted wrong and thermal fuse is blown.

SOLUTION:

Remove the device and cycle power on the PICSTART Plus to reset the internal thermal fuse.

Power LED does not light.

Incompatible power supply or power supply polarity is reversed.

SOLUTION:

Make certain power supply used is the one included with the PICSTART Plus, or a compatible one as specified in Section 3.4.2. If the unit still does not turn on, contact Microchip support.

When importing a 14- or 16-bit hex file for a 12- or 14-bit device, PICSTART Plus programs the device without errors, but a manual verify fails.

SOLUTION:

MPLAB IDE automatically truncates the hex file to fit the core size. For example, if you generate a hex file containing value `AAAAh` and then load the file for a 14-bit device, the value displayed is `2AAAAh`. PICSTART Plus will program the device without errors. However, because the value being stored in memory is `AAAAh`, manual verify will fail.

Values put into program memory by loading a hex file or the Modify dialog, should be truncated to the core size.

PICSTART[®] Plus User's Guide

NOTES:



MICROCHIP

PICSTART[®] PLUS USER'S GUIDE

Index

Symbols

__CONFIG 51
 __IDLOCS 63

B

Blank Check All 55, 68
 Blank Check OTP 11, 55, 68

C

Calibration Data 12
 Restoring 46
 Storing 36
 Calibration Memory 59
 Programming 57, 67
 Programming Example 34
 Read Device 59, 68
 Reading 59, 68
 Calibration Memory
 Programming 34
 CE Compliance 14
 Code Protect 78
 Settings 57, 67
 Common Problems 75
 Communication Port 71
 Communications Port 15, 17, 21, 75
 Components 14
 Configuration Bits
 Dialog 31, 51
 Erasing 69
 Program/Verify 56
 Read Device 58
 Setting 11

Copying Firmware from
 Programmed Device 58
 Customer Support 8

D

Default Voltages 63
 Development Mode
 And Program Memory 52
 Device
 Selecting 62
 Device ID 63
 Setting Manually 63
 Device Programmer Dialog 38, 43, 50
 Disable Programmer 68
 Document Conventions 2

E

EEPROM
 Data 59
 FLASH 55
 Programming Data 57, 67
 Reading Data 59, 68
 Enable Programmer 23, 68
 EPROM 55
 Erase Configuration Bits 69
 Erase Program Memory 69
 Error Log 68
 Example
 Creating an MPLAB Project and
 Source Code 27
 Mid-Range PICmicro MCU Programming 25
 Programming a PIC12C508A 35, 43
 Programming Calibration Memory
 Devices 34
 Restoring Calibration Values 46
 Storing Calibration Data 36

F

File Formats 54
 Firmware
 Copying from Programmed Device 58
 FLASH 55

H

Hardware Installation 17
 Hex File 77
 Generating from MPLAB Project 54
 Loading into Program Memory 53

I

ID Locations 63
 Program Verify 56
 Read Device 58
 INHX32 54
 INHX8M 54
 Installation
 Hardware 17
 MPLAB Software 19
 Internet Address 5

J

JW package 55

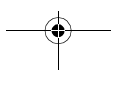
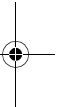
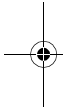
PICSTART[®] Plus User's Guide

L	
LEDs	79
Loading a Hex File	53
M	
Microchip Internet Web Site	5
MPASM	9, 16, 54
MPLAB Development Tools	16
MPLAB Editor	16
MPLAB IDE	14, 15
Install	9
Installing	19
Starting	20
MPLAB Project	27
MPLAB Projects	16
MPLAB-C17 C Compiler	16
MPLAB-ICE Emulator	16
MPLAB-SIM	9
MPLAB-SIM Simulator	16
MPLIB	16
MPLINK	16
O	
Operating System	
Upgrading	24
Operating System Upgrade	69
OTP	
Blank Check	55
P	
PIC12C508A Programming Example	35, 43
PIC16C9XX	13
PIC17C7XX	13
PIC17CXXX	54
PIC18CXXX	54
PICSTART Plus Device Programmer	
Dialog	50
PICSTART Plus Menu Items	68
PICSTART Plus Programmer Menu	23
Power Supply	18
Program Memory	52
Editor Only	65
Emulator	65
Erasing	69
Importing a Hex File	53
Simulator	65
Window	52, 65
Program Statistics	63
Program/Verify Dialog	56, 66
Programming	
Calibration Memory	57, 67
Code Protect Settings	57, 67
EEPROM Data	57, 67
Entire Device	64
Procedure	49
Selectively	56, 66
Verifying	56
R	
Read Device Dialog	58, 67
Reading	
Calibration Memory	59, 68
Device	58
Entire Device	64
Reset Programmer	69
Restoring Calibration Values	46
RS-232	15, 17, 21
S	
Selecting Development Mode	52
Serial Port	15, 17, 21, 71
Software Installation, MPLAB	19
SQTP	63
Starting PICSTART Plus	23
Storing Calibration Data	36
System Requirements, Host Computer	17
T	
Troubleshooting	75
V	
Verify	56
Voltages	63
Default	63
Vpp Adjustment	73
W	
Windowed Device	55
WWW Address	5



Index

NOTES:





MICROCHIP

WORLDWIDE SALES AND SERVICE

AMERICAS

Corporate Office

Microchip Technology Inc.
2355 West Chandler Blvd.
Chandler, AZ 85224-6199
Tel: 480-786-7200 Fax: 480-786-7277
Technical Support: 480-786-7627
Web Address: <http://www.microchip.com>

Atlanta

Microchip Technology Inc.
500 Sugar Mill Road, Suite 200B
Atlanta, GA 30350
Tel: 770-640-0034 Fax: 770-640-0307

Boston

Microchip Technology Inc.
2 LAN Drive, Suite 120
Westford, MA 01886
Tel: 508-480-9990 Fax: 508-480-8575

Chicago

Microchip Technology Inc.
333 Pierce Road, Suite 180
Itasca, IL 60143
Tel: 630-285-0071 Fax: 630-285-0075

Dallas

Microchip Technology Inc.
4570 Westgrove Drive, Suite 160
Addison, TX 75001
Tel: 972-818-7423 Fax: 972-818-2924

Dayton

Microchip Technology Inc.
Two Prestige Place, Suite 150
Miamisburg, OH 45342
Tel: 937-291-1654 Fax: 937-291-9175

Detroit

Microchip Technology Inc.
Tri-Atria Office Building
32255 Northwestern Highway, Suite 190
Farmington Hills, MI 48334
Tel: 248-538-2250 Fax: 248-538-2260

Los Angeles

Microchip Technology Inc.
18201 Von Karman, Suite 1090
Irvine, CA 92612
Tel: 949-263-1888 Fax: 949-263-1338

New York

Microchip Technology Inc.
150 Motor Parkway, Suite 202
Hauppauge, NY 11788
Tel: 631-273-5305 Fax: 631-273-5335

San Jose

Microchip Technology Inc.
2107 North First Street, Suite 590
San Jose, CA 95131
Tel: 408-436-7950 Fax: 408-436-7955

AMERICAS (continued)

Toronto

Microchip Technology Inc.
5925 Airport Road, Suite 200
Mississauga, Ontario L4V 1W1, Canada
Tel: 905-405-6279 Fax: 905-405-6253

ASIA/PACIFIC

China - Beijing

Microchip Technology, Beijing
Unit 915, 6 Chaoyangmen Bei Dajie
Dong Erhuan Road, Dongcheng District
New China Hong Kong Manhattan Building
Beijing, 100027, P.R.C.
Tel: 86-10-85282100 Fax: 86-10-85282104

China - Shanghai

Microchip Technology
Unit B701, Far East International Plaza,
No. 317, Xianxia Road
Shanghai, 200051, P.R.C.
Tel: 86-21-6275-5700 Fax: 86-21-6275-5060

Hong Kong

Microchip Asia Pacific
Unit 2101, Tower 2
Metroplaza
223 Hing Fong Road
Kwai Fong, N.T., Hong Kong
Tel: 852-2-401-1200 Fax: 852-2-401-3431

India

Microchip Technology Inc.
India Liaison Office
Divyasree Chambers
1 Floor, Wing A (A3/A4)
No. 11, O'Shaugnessey Road
Bangalore, 560 027, India
Tel: 91-80-207-2165 Fax: 91-80-207-2171

Japan

Microchip Technology Intl. Inc.
Benex S-1 6F
3-18-20, Shinyokohama
Kohoku-Ku, Yokohama-shi
Kanagawa, 222-0033, Japan
Tel: 81-45-471- 6166 Fax: 81-45-471-6122

Korea

Microchip Technology Korea
168-1, Youngbo Bldg. 3 Floor
Samsung-Dong, Kangnam-Ku
Seoul, Korea
Tel: 82-2-554-7200 Fax: 82-2-558-5934

ASIA/PACIFIC (continued)

Singapore

Microchip Technology Singapore Pte Ltd.
200 Middle Road
#07-02 Prime Centre
Singapore, 188980
Tel: 65-334-8870 Fax: 65-334-8850

Taiwan

Microchip Technology Taiwan
11F-3, No. 207
Tung Hua North Road
Taipei, 105, Taiwan
Tel: 886-2-2717-7175 Fax: 886-2-2545-0139

EUROPE

Denmark

Microchip Technology Denmark ApS
Regus Business Centre
Lautrup høj 1-3
Ballerup DK-2750 Denmark
Tel: 45 4420 9895 Fax: 45 4420 9910

France

Arizona Microchip Technology SARL
Parc d'Activite du Moulin de Massy
43 Rue du Saule Trapu
Batiment A - ler Etage
91300 Massy, France
Tel: 33-1-69-53-63-20 Fax: 33-1-69-30-90-79

Germany

Arizona Microchip Technology GmbH
Gustav-Heinemann-Ring 125
D-81739 München, Germany
Tel: 49-89-627-144 0 Fax: 49-89-627-144-44

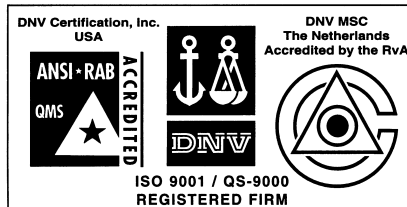
Italy

Arizona Microchip Technology SRL
Centro Direzionale Colleoni
Palazzo Taurus 1 V. Le Colleoni 1
20041 Agrate Brianza
Milan, Italy
Tel: 39-039-65791-1 Fax: 39-039-6899883

United Kingdom

Arizona Microchip Technology Ltd.
505 Eskdale Road
Winnersh Triangle
Wokingham
Berkshire, England RG41 5TU
Tel: 44 118 921 5858 Fax: 44-118 921-5835

8/01/00



Microchip received QS-9000 quality system certification for its worldwide headquarters, design and wafer fabrication facilities in Chandler and Tempe, Arizona in July 1999. The Company's quality system processes and procedures are QS-9000 compliant for its PICmicro® 8-bit MCUs, KEEL00® code hopping devices, Serial EEPROMs and microperipheral products. In addition, Microchip's quality system for the design and manufacture of development systems is ISO 9001 certified.

All rights reserved. © 2000 Microchip Technology Incorporated. Printed in the USA. 8/00 Printed on recycled paper.

Information contained in this publication regarding device applications and the like is intended through suggestion only and may be superseded by updates. It is your responsibility to ensure that your application meets with your specifications. No representation or warranty is given and no liability is assumed by Microchip Technology Incorporated with respect to the accuracy or use of such information, or infringement of patents or other intellectual property rights arising from such use or otherwise. Use of Microchip's products as critical components in life support systems is not authorized except with express written approval by Microchip. No licenses are conveyed, implicitly or otherwise, except as maybe explicitly expressed herein, under any intellectual property rights. The Microchip logo and name are registered trademarks of Microchip Technology Inc. in the U.S.A. and other countries. All rights reserved. All other trademarks mentioned herein are the property of their respective companies.